

## Historic, archived document

Do not assume content reflects current scientific knowledge, policies, or practices.



6241

LIBRARY RECEIVED  
JAN 15 1925  
U. S. Department of Agriculture

1925

# SEEDS IN BULK

WHOLESALE TRADE LIST  
AND TELEGRAPHIC CODE  
FOR MERCHANTS ONLY



Keep this List Handy. We may have  
Occasion to Wire you in Code.

OFFERED BY

**D. M. Ferry & Co.**  
Seedsman  
DETROIT - MICHIGAN

# SPECIAL NOTICE

**W**E HANDLE absolutely nothing that we do not believe to be the best obtainable. Our unequaled advantages for the production of the best seeds enable us to offer them to our customers at the lowest prices for which well grown and selected seeds true to name can be furnished.

Cheap goods in our line should be resolutely shunned by all dealers who want to supply seeds that will satisfy and make money for the planters and gardeners who trust them with their orders. Our seeds have behind them a history of constant success during the past sixty nine years and we continue to affirm—

*The best is always the cheapest;  
Reliable seeds cannot be afforded at half price.*

☞ These prices are made in anticipation of probable results of crops, therefore, we are not bound by them for any definite time or quantity and they are subject to change without notice.

**Seeds in bulk are sold outright and are not returnable.**

The prices are for delivery f. o. b. cars, Detroit, Mich., and do not include the cost of containers. When seamless cotton grain bags, boxes, or barrels are necessary for safe transportation, such packages are charged at value and are not returnable.

We do not supply less than 10 pounds at the 100 pound rate nor less than one-half pound at the pound rate nor less than one-half ounce at the ounce rate. Smaller quantities will be priced at higher rates.

The varieties in each class (for example, Wax Podded Beans) are usually arranged in their order of earliness.

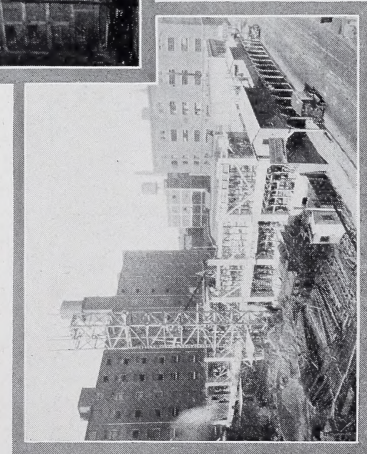
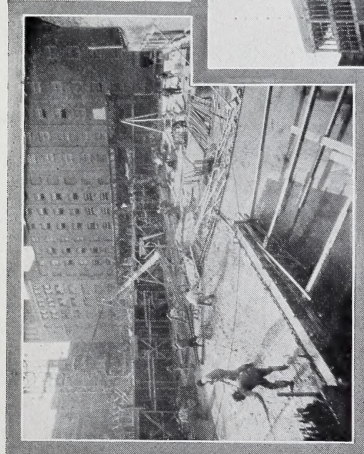
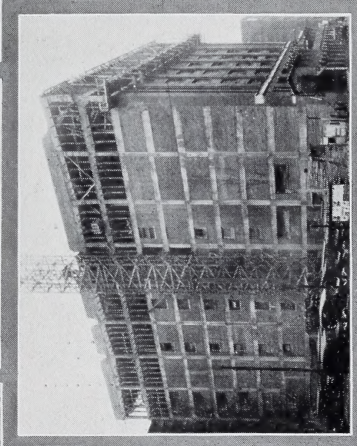
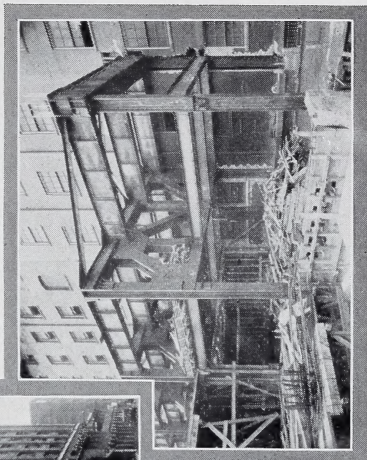
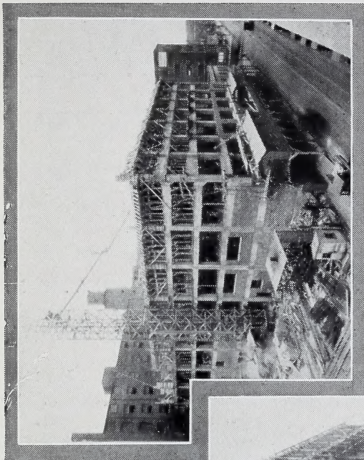
**TERMS** NET CASH, June 1st, 1925, without regard to date of purchase, or a discount of one per cent. per month for the unexpired time when paid before maturity. Field Peas, all Grass and Clover Seeds, Miscellaneous Farm Seeds and Bird Seeds, net cash 10 days, without any discount whatever. Cash or satisfactory references should accompany orders from unknown correspondents.

We give no warranty, express or implied, as to description, purity, productiveness, or any other matter of any seeds we send out, and we will not be in any way responsible for the crop. If the purchaser does not accept the goods on these terms they are at once to be returned.

**D. M. FERRY & CO.**

DETROIT, MICH., January 1, 1925.

☞ In telegraphing, please use our CODE on page 49. Our telegraph cipher words should be used in *Telegrams only—not in Orders by Mail.*



These photographs show our new warehouse 'L' in course of construction. It is 128 feet wide by 157 feet deep and contains 187,500 square feet of floor space. Our Detroit warehouse floor space is now 19 acres, all devoted to needs of the vegetable and flower seed business.

# STANDARD SEEDS IN BULK

## ARTICHOKE

Green Globe.....	Tel. Cipher	Per Lb.
	<b>Accomac</b> .....	\$6 00

## ASPARAGUS

Conover's Colossal.....	<b>Aitkin</b> .....	Cannot offer
	<b>Palmetto</b> .....	
	<b>Alameda</b> .....	60
	<b>Washington</b> .....	
	<b>Alachua</b> .....	2 50

## ASPARAGUS ROOTS

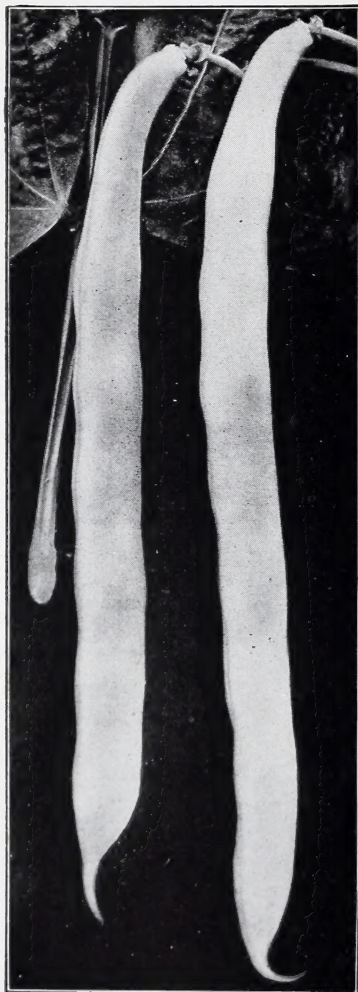
Conover's Colossal.....	Per 1000
<b>Alamance</b> .....	\$8 00
<b>Palmetto</b> .....	<b>Albemarle</b> ..... 8 00
<b>Washington</b> .....	<b>Alcona</b> ..... 10 00

## BEANS—Dwarf or Bush

Not less than 10 lbs. at 100 lb. rate.

### WAX PODDED SORTS

	Tel. Cipher	Per 100 Lbs
<b>Challenge Dwarf</b> .....	<b>Albany</b> .....	\$0 18 \$16 00
<b>D.M. Ferry &amp; Co.'s</b>		
<b>Black Wax</b> .....	<b>Alcorn</b> ..	20 17 00
<b>Golden Wax</b> .....	<b>Alger</b> ....	20 17 00
<b>Michigan White</b>		
<b>Wax</b> .....	<b>Allegany</b> ..	18 15 00
<b>Grenell Rust Proof</b>		
<b>Wax</b> .....	<b>Amador</b> ..	20 17 00
<b>Refugee Wax</b> .....		
<b>Keeney's Rustless</b>		
<b>Golden Wax</b> .....	<b>Alpena</b> ..	18 15 00
<b>Prolific Wax, Black</b>		
<b>Seeded</b> .....	<b>Anderson</b>	18 15 00
<b>Pencil Pod Wax</b> .....	<b>Andrews</b> ..	20 18 00
<b>Currie's Rust Proof</b>		
<b>Wax</b> .....	<b>Anoka</b> ..	18 15 00
<b>Sure Crop Wax (See cut)</b>	<b>Ansley</b>	18 16 00
<b>Unrivaled Wax</b> .....	<b>Anson</b> ..	18 16 00
<b>Wardwell's Kidney</b>		
<b>Wax</b> .....	<b>Antelope</b>	22 20 00
<b>Stringless Kidney</b>		
<b>Wax</b> .....	<b>Antrim</b> ..	Sold out
<b>Round Pod Kidney</b>		
<b>Wax</b> .....	<b>Apache</b> ..	22 20 00
<b>Davis Wax</b> .....	<b>Aransas</b> ..	22 20 00
<b>Scarlet Flageolet Wax</b>	<b>Archer</b> ..	Sold out
<b>Violet Flageolet Wax</b>		
<b>or Perfection Wax</b>	<b>Arenac</b> ..	Sold out
<b>Hodson Wax</b> .....	<b>Ashe</b> ..	18 16 00
<b>Crystal White Wax</b>	<b>Ashley</b> ..	20 18 00

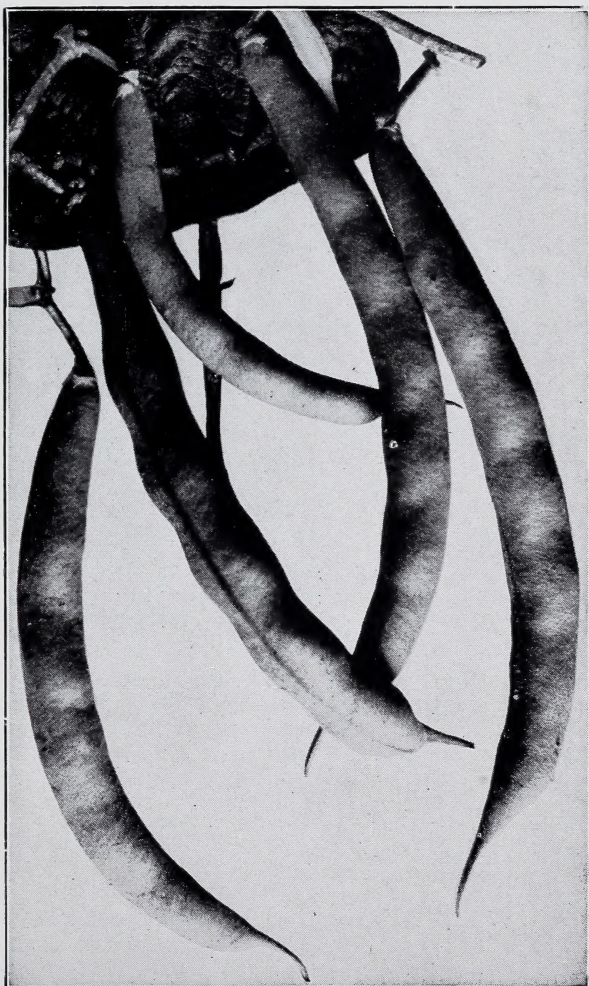


Sure Crop Wax

**BEANS—Dwarf or Bush—Continued**

## GREEN PODDED SORTS

	Tel. Cipher	Per Lb.	Per 100 Lbs.
<b>Extra Early Refugee</b> .....	<b>Atascosa</b> ...	\$0 18	\$16 00
<b>Round Yellow Six Weeks, Improved Round Pod</b> ..	<b>Athens</b> ....	15	12 00
<b>Bountiful</b> .....	<b>Attala</b> ....	22	20 00
<b>Full Measure</b> .....	<b>Audubon</b> ..	18	16 00
<b>Extra Early Round Pod Red Valentine</b> ( <i>See cut</i> )	<b>Auglaize</b> ...	18	15 00



Extra Early Round Pod Red Valentine

## BEANS—Dwarf or Bush—Continued

Not less than 10 lbs. at 100 lb. rate.

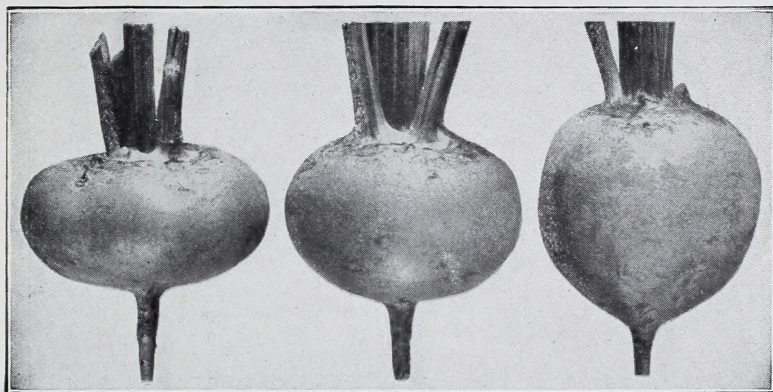
## GREEN PODDED SORTS

	Tel. Cipher	Per Lb.	Per 100 Lbs.
Black Valentine.....	<b>Autauga</b> ...	\$0 18	\$15 00
Stringless Green Pod.....	<b>Bailey</b> ....	22	20 00
Giant Stringless Green Pod.....	<b>Baldrick</b> ...	25	22 00
Tennessee Green Pod.....	<b>Bamberg</b> ..	20	17 00
Dwarf Horticultural.....	<b>Banks</b> ....	18	16 00
Refugee or Thousand to One. Remarkably pro- ductive. Stands handling well and is a very pop- ular variety with canners.....	<b>Barber</b> ....	18	16 00
Rogers' Stringless Refugee.....	<b>Baraga</b> ....	25	22 00
Early Marrow Pea or Dwarf White Navy.....	<b>Barnes</b> ....	13	10 00
Large White Marrow or Mountain.....	<b>Barton</b> ....	15	12 00
Royal Dwarf Kidney.....	<b>Bastrop</b> ....		Sold out
DWARF LIMAS			
Bush Lima or Dwarf Sieva ( <i>Henders' r's</i> ).....	<b>Bath</b> ....	20	18 00
Burpee's Improved Bush Lima.....	<b>Bayfield</b> ...		Sold out
Dwarf Large White Lima ( <i>Burpee's</i> ).....	<b>Baylor</b> ....	25	22 00
Fordhook Bush Lima.....	<b>Beadle</b> ....	35	30 00

## Pole or Running

White Creaseback.....	<b>Becker</b> ....	20	18 00
Kentucky Wonder. (Old Homestead) Very pro- ductive and of the best quality for snaps.....	<b>Bedford</b> ...	18	16 00
Nancy D.....		22	20 00
St. Louis Perfection White. Early, very pro- ductive, white seeded; unsurpassed in its class.....	<b>Beckham</b> ..	20	18 00
Red Speckled Cut Short or Corn Hill.....	<b>Belknap</b> ...	20	17 00
Scotia or Striped Creaseback. Especially suit- able for growing on corn for snaps.....	<b>Bell</b> .....	20	17 00
Baldwin Wonder Wax.....	<b>Benning</b> ...	20	17 00
Dutch Case Knife.....	<b>Belmont</b> ...	20	17 00
Kentucky Wonder Wax. Similar to Kentucky Wonder, but pods are attractive light yellow....	<b>Beltrami</b> ..	20	18 00
Early Golden Cluster Wax.....	<b>Benson</b> ....	20	18 00
London Horticultural or Speckled Cranberry.....	<b>Benzie</b> ....	20	17 00
Lazy Wife.....	<b>Bexar</b> ....	20	17 00
POLE LIMAS			
Seibert's Early Lima.....	<b>Bighorn</b> ...	25	22 00
Small White Lima, Carolina or Sieva.....	<b>Billings</b> ...	22	20 00
Ideal Pole Lima.....	<b>Bladen</b> ....	25	22 00
King of the Garden Lima.....	<b>Blair</b> ....	25	22 00
Carpinteria Pole Lima. Very large beans with greenish tint, and very best quality.....	<b>Blanco</b> ....	25	22 00
Detroit Mammoth Lima.....	<b>Blaine</b> ....	28	23 00
Large White Lima.....	<b>Bland</b> ....	22	20 00





Extra Early Egyptian, Crosby's Egyptian and Detroit Dark Red

**BEE T**

	Tel. Cipher	Per Lb
<b>Extra Early Egyptian Blood Turnip.</b> ( <i>See cut</i> ).....	<b>Boise</b> .....	\$0 45
<b>Crosby's Egyptian</b> ( <i>See cut</i> ).....	<b>Bond</b> .....	50
<b>Detroit Dark Red.</b> Tested seed, our own superior strain ( <i>See cut</i> ).....	<b>Boone</b> .....	60
<b>Early Eclipse</b> .....	<b>Boreman</b> .....	40
<b>Edmand's Early Blood Turnip</b> .....	<b>Bossier</b> .....	40
<b>Early Blood Turnip, improved</b> .....	<b>Bourbon</b> .....	40
<b>D. M. Ferry &amp; Co.'s Half Long Blood</b> .....	<b>Bradford</b> .....	60
<b>Long Dark Blood in Ground</b> .....	<b>Branch</b> .....	40
“ “ “ above Ground.....	<b>Braxton</b> .....	50
—————		
<b>Swiss Chard.</b> Silver Leaf.....	<b>Brazoria</b> ..	45
“ “ Lucullus.....	<b>Breathit</b> ..	50

**MANGEL WURZEL**

<b>Giant Feeding Sugar Beet or Half Sugar Mangel.</b> For		
Stock Feeding.....	<b>Brooks</b> .....	25
<b>D. M. Ferry &amp; Co.'s Imp'd Mammoth Long Red</b> .....	<b>Buncombe</b> .....	25
<b>Yellow Leviathan</b> .....	<b>Burke</b> .....	25
<b>Golden Tankard</b> .....	<b>Burnett</b> .....	25

**SUGAR BEE T**

<b>Klein Wanzleben</b> .....	<b>Bristol</b> .....	30
------------------------------	----------------------	----

**BROCCOLI**

<b>Early Large White French</b> .....	<b>Butts</b> .....	3 00
---------------------------------------	--------------------	------

**BRUSSELS SPROUTS**

<b>Improved Half Dwarf</b> .....	<b>Cabell</b> .....	1 25
----------------------------------	---------------------	------



Copenhagen Market

## CABBAGE

### FIRST EARLY SORTS

Tel. Cipher Per Lb.

<b>Early Jersey Wakefield.</b> The earliest and surest heading of first early cabbages.....	<b>Caddo</b> .....	\$ 2 00
<b>Copenhagen Market</b> ( <i>See cut</i> ).....	<b>Callahan</b> .....	3 00
<b>Charleston or Large Wakefield</b> .....	<b>Calhoun</b> .....	2 00

### SECOND EARLY AND INTERMEDIATE SORTS

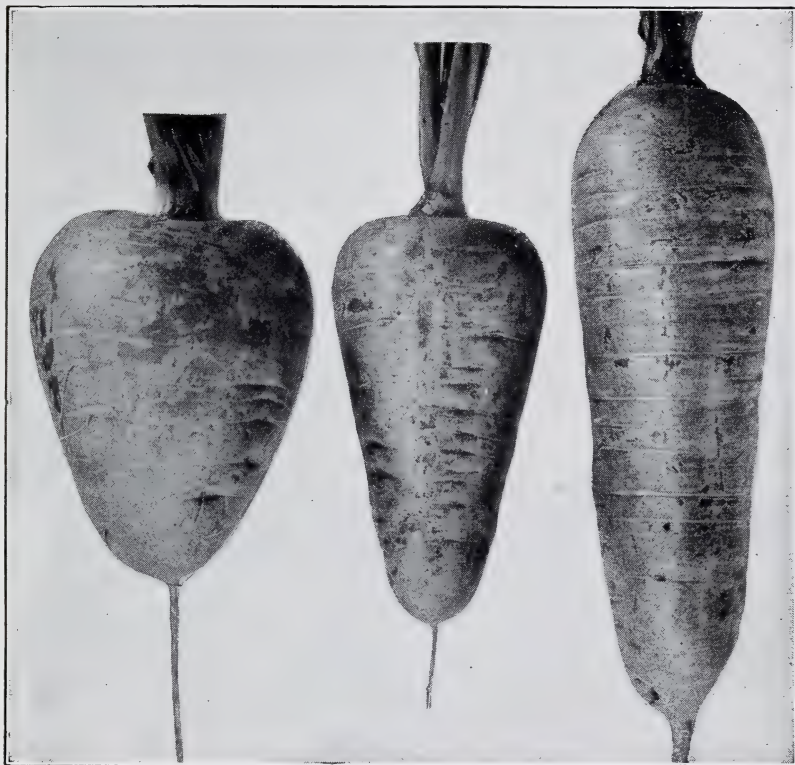
<b>Early Dwarf Flat Dutch</b> .....	<b>Camden</b> .....	1 50
<b>Henderson's Early Summer</b> .....	<b>Calvert</b> .....	1 75
<b>Glory of Enkhuizen</b> .....	<b>Cambria</b> .....	2 00
<b>All Head Early</b> .....	<b>Camp</b> .....	1 75
<b>Early Winnigstadt</b> .....	<b>Cannon</b> .....	1 75
<b>Fottler's Early Drumhead or Brunswick Short Stem</b> .....	<b>Carroll</b> .....	1 50
<b>Succession</b> .....	<b>Carter</b> .....	2 50
<b>Midseason Market</b> .....	<b>Cargile</b> .....	3 50
<b>All Seasons</b> .....	<b>Carbon</b> .....	2 50
<b>Stein's Early Flat Dutch</b> .....	<b>Carson</b> .....	2 00

### LATE OR AUTUMN AND WINTER SORTS

<b>Volga</b> .....	<b>Cascade</b> .....	1 50
<b>Surehead</b> .....	<b>Casey</b> .....	1 50
<b>D. M. Ferry &amp; Co.'s Premium Late Flat Dutch</b> .....	<b>Catoosa</b> .....	1 50
<b>D. M. Ferry &amp; Co.'s Premium Late Drumhead</b> .....	<b>Chambers</b> .....	1 50
<b>Hollander or Danish Ball Head.</b> Our own strain and growth.....	<b>Chatham</b> .....	12 00
<b>Hollander or Danish Ball Head.</b> Choice imported seed.....	<b>Chase</b> .....	2 00
<b>Wisconsin No. 8</b> .....	<b>Chariton</b> .....	8 00
<b>Mammoth Rock Red</b> .....	<b>Cheatham</b> .....	2 00
<b>Savoy, Improved American</b> .....	<b>Cherry</b> .....	1 75

### CHINESE IMPROVED or PE-TSAI. Also called Celery

<b>Cabbage.</b> Grows like Cos Lettuce.....	<b>Cheshire</b> .....	1 25
---	-----------------------	------



Guerande, Chantenay and Danvers

## CARROT

	Tel. Cipher	Per Lb.
Earliest Short Horn, <i>for forcing</i> .....	<b>Chester</b> ....	\$0 75
<b>Early Scarlet Horn</b> .....	<b>Chicot</b> ....	70
Early Half Long Scarlet Carentan, <i>coreless</i> .....	<b>Chippewa</b> ..	75
Half Long Scarlet Nantes, Stump-Rooted.....	<b>Choctaw</b> ...	70
<b>Chantenay</b> ( <i>See cut</i> ).....	<b>Chowan</b> ...	75
<b>Guerande or Ox Heart</b> ( <i>See cut</i> ).....	<b>Clare</b> .....	60
<b>Danvers</b> . Our strain is unsurpassed ( <i>See cut</i> ).....	<b>Clark</b> .....	60
<b>Improved Long Orange</b> .....	<b>Clatsop</b> ...	50
D. M. Ferry & Co.'s Improved Short White.....	<b>Clayton</b> ...	45



Early Snowball

## CAULIFLOWER

Our stocks of Cauliflower are all of the finest quality and are produced by the most experienced growers in Europe, in such localities as are best suited to their proper development and the greatest care is taken to save seed from perfectly developed plants only.

	Tel. Cipher	Per Oz.	Per Lb.
<b>Early Snowball.</b> This is unquestionably the earliest maturing strain of the true short leaved Snowball type. ( <i>See cut</i> ).....	<b>Clermont.</b>	\$1 25	\$18 00
<b>Extra Early Dwarf Erfurt.</b> A remarkably sure heading early cauliflower. It is nearly as early as Snowball.....	<b>Clinton...</b>	1 15	16 00
<b>Danish Giant, Dry Weather.</b> Especially recommended for growing in the open ground. In localities where other varieties fail to head on account of hot, dry weather, this sort will usually give excellent results.....	<b>Coahoma.</b>	1 25	18 00
<b>Large Algiers.....</b>	<b>Coconino.</b>	60	7 00
<b>Veitch's Autumn Giant.....</b>	<b>Coffee.....</b>	<b>40</b>	<b>5 00</b>



Columbia

## CELERY

	Tel. Cipher	Per Lb.
<b>Golden Yellow Self Blanching</b> (true, original strain)		
Oz. 50c.....	<b>Coke</b> .....	\$6 00
<b>Wonderful</b> .....	<b>Colbert</b> ...	20 00
<b>White Plume</b> .....	<b>Coleman</b> ..	2 00
<b>Easy Blanching</b> .....	<b>Colfax</b> ....	6 00
<b>Columbia</b> .....	<b>Colleton</b> ...	3 50
<b>Giant Pascal</b> .....	<b>Comanche</b> ..	2 50
<b>Winter Reliance.</b> A very desirable late keeping variety	<b>Conejos</b> ...	2 50
<b>French's Success</b> .....	<b>Converse</b> ..	2 50
Soup or Cutting.....	<b>Cooper</b> ....	75
Celery Seed ( <i>for flavoring</i> ).....	<b>Coosa</b> .....	30

---

**CELERIAC, Large Smooth Prague**..... **Cortland**.. 1 25

## CHERVIL

	Tel. Cipher	Per Lb.
Curled.....	<b>Costilla</b> .....	\$1 25

## CHICORY

Large Rooted or Coffee.....	<b>Coweta</b> .....	1 00
Witloof or French Endive.....	<b>Cowley</b> .....	1 25
Small Rooted or Radichetta.....	<b>Cowpens</b> ..	1 25

## CHIVES

Allium Schoenoprasum.....	Oz. 50c. <b>Cowlitz</b>
---------------------------	-------------------------

## COLLARDS

Georgia, Southern or Creole.....	<b>Crane</b> .....	60
----------------------------------	--------------------	----

## CORN

## (SHELLED)

CAUTION—Sweet Corn in bulk, even after being thoroughly cured, will often gather moisture and spoil, particularly if it has been exposed to a low temperature. To prevent this it should be taken out of the bags as soon as received and spread in a dry place.

Not less than 10 lbs. at 100 lb. rate.

## SWEET OR TABLE VARIETIES

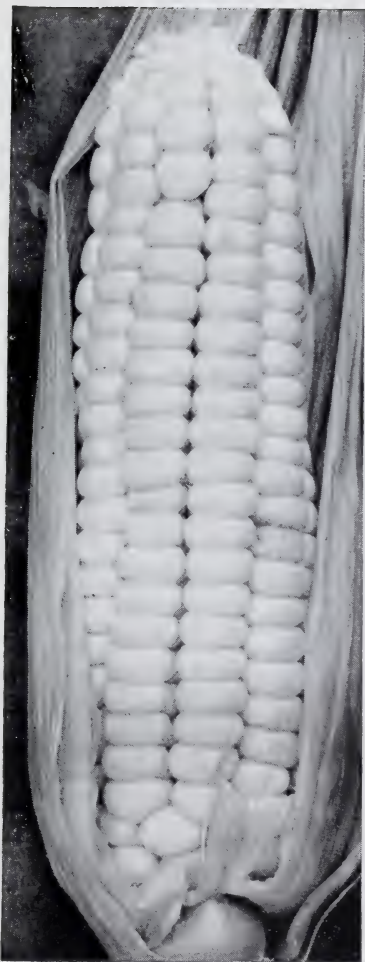
	Tel. Cipher	Per Lb.	Per 100 Lbs.
<b>Alpha</b> .....	<b>Craven</b> .....	\$0 22	\$20 00
<b>Mammoth White Cory</b> ( <i>See cut, page 11</i> ).....	<b>Crawford</b> ..	20	18 00
<b>Crosby's Early</b> .....	<b>Cross</b> .....	30	25 00
<b>Golden Bantam</b> ( <i>See cut, page 11</i> ).....	<b>Culpeper</b> ..	22	20 00
<b>Charlevoix</b> .....	<b>Cuming</b> .....	22	20 00
<b>Early Minnesota</b> .....	<b>Curry</b> .....		Sold out
<b>Kendel's Early Giant</b> .....	<b>Cuyahoga</b> ..	20	18 00
<b>Early Sweet or Sugar</b> .....	<b>Dakota</b> .....	20	18 00
<b>Black Mexican</b> .....	<b>Darke</b> .....	20	18 00
<b>Ferry's Early Evergreen</b> .....	<b>Davidson</b> ..	25	22 00
<b>Country Gentleman</b> .....	<b>Davis</b> .....	30	25 00
<b>Stowell's Evergreen</b> .....	<b>Dawes</b> .....	25	22 00
<b>Mammoth</b> .....	<b>Day</b> .....	25	22 00

## FIELD VARIETIES

<b>Extra Early Adams</b> .....	<b>Decatur</b> ..	10	7 50
<b>Early Adams or Burlington</b> .....	<b>Dekalb</b> .....	09	7 00
<b>Early Golden Dent or Pride of the North</b> .....	<b>Denver</b> .....	08	6 00

## POP CORN

<b>Black Beauty</b> (on the cob).....	<b>Desha</b> .....	10	7 00
“ “ (shelled).....		12	
<b>White Rice</b> (on the cob).....	<b>Deuel</b> .....	10	6 00
“ “ (shelled).....		12	
<b>Japanese Hulless</b> (on the cob).....	<b>Dewar</b> .....	10	8 00
“ “ (shelled).....		12	



Alpha



Charlevoix

**CORN SALAD or Fetticus**

Tel. Cipher Per Lb.

Large Seeded, Large Leaved.. **Dewitt**. \$0 90

**CRESS**

Curled or Pepper Grass..... **Dickey**... 30

True Water..... **Dodge**... 2 25

**CUCUMBER**

Early Cluster..... **Doniphan**..... 75

Early Short Green or Early  
Frame..... **Dooly**..... 75

**Snow's Pickling**..... **Drew**..... 75

**Chicago or Westerfield**  
**Pickling**..... **Dubois**..... 75

**Boston Pickling**..... **Dukes**..... 75

**Jersey Pickling**..... **Dunklin**... 75

**Early White Spine**..... **Dupage**... 75

**Klondike**..... **Dutchess**.. 1 00

**Early Fortune**..... **Dutro**..... 1 00

**Davis Perfect**..... **Dyer**..... 1 00

**Extra Long or Evergreen**  
**White Spine**..... **Duval**..... 1 00

**Improved Long Green.**  
We believe the stock we  
offer has no equal (*See cut*) **Eddy**..... 1 25

**Small Gherkin (for pickles)**. **Edmonson**. 1 25

**DANDELION**

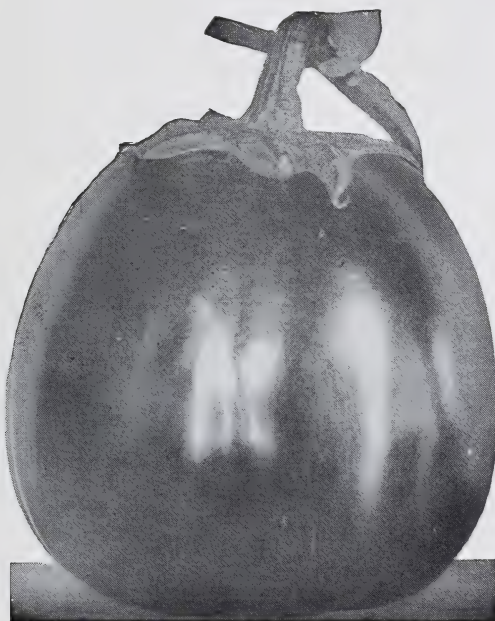
Cultivated or French Com-  
mon..... **Edwards**.. 1 25

Improved Thick Leaved.. **Eldorado**. 3 50



**Improved Long Green**





Egg Plant, D. M. Ferry & Co.'s Improved Large Purple

## EGG PLANT

	Tel. Cipher	Per Lb.
<b>Black Beauty</b> .....	<b>Ellis</b> .....	\$4 00
Large New York Purple.....	<b>Elmore</b> .....	4 00
<b>D. M. Ferry &amp; Co.'s Improved Large Purple, spineless</b> .....	<b>Emanuel</b> ..	4 00

## ENDIVE

<b>Large Green Curled</b> .....	<b>Emmet</b> ....	75
Moss Curled.....	<b>Erath</b> .....	75
Ever White Curled.....	<b>Estill</b> .....	75
Broad Leaved Batavian or Escarolle.....	<b>Falls</b> .....	75

## FENNEL

Florence.....	<b>Schuyler</b> ...	90
---------------	---------------------	----

## GARLIC

Bulbs.....	<b>Faulkner</b> ..	30
------------	--------------------	----



Kale, Dwarf Curled Scotch

## HORSE RADISH

	Tel. Cipher	Per 100
Small Roots, Maliner-Kren.....	<b>Fentress</b> ...	\$1 00

## KALE or Borecole

		Per Lb.
Tall Green Curled Scotch.....	<b>Fergus</b> .....	\$0 75
<b>Dwarf Curled Scotch</b> ( <i>See cut</i> ).....	<b>Finney</b> .....	1 00
Dwarf Purple.....	<b>Fluvanna</b> .....	1 00
<b>Siberian</b> or Sprouts.....	<b>Fleming</b> .....	75

## KOHL RABI

<b>Early White Vienna</b> , <i>extra for forcing</i> .....	<b>Forest</b> .....	2 00
<b>Early Purple Vienna</b> , <i>very early</i> .....	<b>Foster</b> .....	2 00
<b>Large Green</b> .....	<b>Franklin</b> .....	1 50

## LEEK

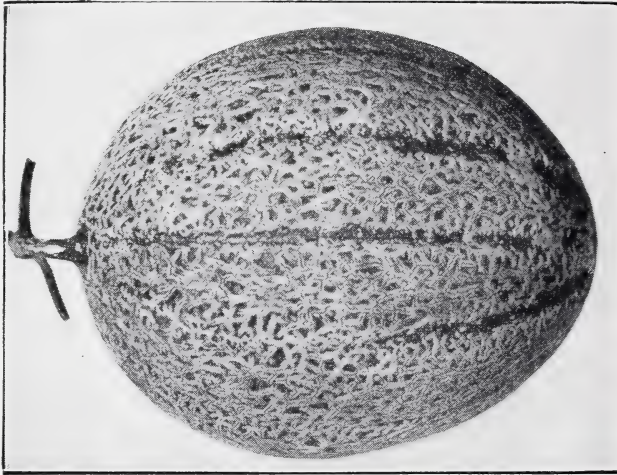
London Flag.....	<b>Fremont</b> ...	1 50
<b>Large American Flag</b> .....	<b>Frio</b> .....	1 50
Large Rouen.....	<b>Furnas</b> .....	1 50
<b>Monstrous Carentan</b> .....	<b>Gallatin</b> .....	2 00



Black Seeded Simpson

## LETTUCE

CABBAGE OR HEADING VARIETIES		Tel. Cipher	Per Lb
<b>May King, w. s.</b> .....	<b>Garfield</b> ...		\$1 00
Early Tennis Ball, <i>b. s.</i> .....	<b>Garvin</b> ....		1 00
<b>Salamander, b. s.</b> .....	<b>Gaston</b> ....		1 00
<b>Mammoth Black Seeded Butter</b> .....	<b>Gentry</b> ....		1 25
Deacon, <i>w. s.</i> .....	<b>Gila</b> ... Crop failed		
<b>Unrivald Summer, w. s.</b> .....	<b>Giles</b> ....		1 50
<b>Big Boston, w. s.</b> .....	<b>Gilliam</b> ....		1 50
California Cream Butter or Royal Summer Cabbage, <i>brown seed</i> .....	<b>Gilpin</b> ....		1 00
Jersey Winter, <i>w. s.</i> .....	<b>Glascoek</b> Crop failed		
Los Angeles, (New York, or Wonderful) <i>w. s.</i> .....	<b>Goliad</b> ....		2 00
Hanson, <i>w. s.</i> .....	<b>Gordon</b> ....		1 00
CURLLED OR LOOSE LEAVED VARIETIES			
<b>Grand Rapids, b. s.</b> .....	<b>Gove</b> ....		1 25
Detroit Market Gardeners' Forcing, <i>w. s.</i> .....	<b>Grafton</b> ....		1 25
Simpson's Early Curled, <i>w. s.</i> .....	<b>Grainger</b> ....		1 00
<b>Ferry's Early Prize Head, w. s.</b> .....	<b>Grant</b> ....		1 00
<b>Black Seeded Simpson (See cut)</b> .....	<b>Graves</b> ....		1 25
-----			
Early White Self-Folding Cos, <i>w. s. (Romaine)</i> .....	<b>Gregg</b> ....		1 50



Admiral Togo

## MUSK MELON

### GREEN FLESHED VARIETIES

	Tel. Cipher	Per Lb.
<b>Extra Early Hackensack</b> .....	<b>Gunnison</b> ..	\$0 75
<b>Netted Gem or Rocky Ford</b> .....	<b>Gwinnett</b> ..	65
<b>10-25, Salmon Tint</b> .....	<b>Hale</b> .....	85
<b>Baltimore or Acme</b> .....	<b>Hamblen</b> ..	65
<b>Hackensack or Turk's Cap</b> .....	<b>Hansford</b> ..	65

### ORANGE FLESHED VARIETIES

<b>Emerald Gem.</b> For home use and near markets it leads all other kinds on account of its sweetness and convenient size.....	<b>Harford</b> ...	75
<b>Tip Top</b> .....	<b>Harnett</b> ...	85
<b>Extra Early Osage.</b> Fully a week earlier than Osage, a little smaller, more nearly round and with more netting.....	<b>Hart</b> .....	80
<b>Petoskey or Paul Rose</b> .....	<b>Hartley</b> ....	75
<b>Admiral Togo</b> or Orange Fleshed Rocky Ford. Unexcelled in flavor. We consider this the best small shipping melon yet introduced ( <i>See cut</i> ).....	<b>Haskell</b> ....	75
<b>Improved Hoodoo or Hearts of Gold.</b> A splendid orange fleshed variety of medium size. By many considered the finest shipping melon.....	<b>Hays</b> .....	80
<b>Defender.</b> Originated and introduced by us in 1901. We believe it identical with Burrell's Gem.....	<b>Heard</b> .....	80
<b>Osage</b> or Miller's Cream. Our stock is unsurpassed.....	<b>Hennepin</b>	Sold out
<b>HONEY DEW MELON</b> .....	<b>Hernando</b> .....	1 00
<b>CASSABA MELON, Golden Beauty</b> .....	<b>Hickory</b> ....	1 00

## WATER MELON

	Tel. Cipher	Per Lb.
Harris' Earliest.....	<b>Hidalgo</b> .....	\$0 45
D. M. Ferry & Co.'s Peerless (Ice Cream).....	<b>Hocking</b> .....	45
Round Light Icing.....	<b>Holt</b> .....	45
Long Light Icing.....	<b>Hooker</b> .....	45
Irish Grey ( <i>See cut</i> ).....	<b>Hopkins</b> .....	50
Monte Cristo or Kleckley's Sweets.....	<b>Houston</b> .....	50
Florida Favorite.....	<b>Howell</b> .....	45
Tom Watson.....	<b>Humacao</b> .....	50
Chilian.....	<b>Ida</b> .....	50
Sweet Heart.....	<b>Idaho</b> .....	45
Gypsy or Georgia Rattlesnake.....	<b>Ingham</b> .....	45
Citron, <i>for preserving</i> (red seed).....	<b>Iredell</b> .....	50



Irish Grey

## MUSHROOM SPAWN

	Tel. Cipher	Per Brick
Spore Culture. Per 100 bricks (each about 1¼ lbs.) \$16.00.	<b>Iroquois</b> .....	\$0 20

## MUSTARD

		Per Lb.
White English.....	<b>Isabella</b> .....	\$0 20
Southern Giant Curled.....	<b>Island</b> .....	50
Large Smooth Leaved.....	<b>Isanti</b> .....	50
Florida Broad Leaf.....	<b>Isett</b> .....	60

## NASTURTIUM

Tall Mixed Garden.....	Itasca.....	50
------------------------	-------------	----

## OKRA or Gumbo

Extra Early Dwarf Green Prolific.....	Jabez.....	30
White Velvet.....	Jackson.....	30
Perkins' Mammoth Long Pod.....	Jasper.....	30

## ONION

Our onion seeds are grown from the choicest selected bulbs raised from pedigree seed of the choicest selected types. You may find onion seed offered for less than ours. You cannot find any of better quality, no matter how high the prices asked.

	Tel. Cipher	Per Lb.
Extra Early Red.....	<b>Johnston</b> ...	\$1 25
<b>Large Red Wethersfield</b> .....	<b>Juneau</b> ...	1 25
<b>Southport Red Globe</b> .....	<b>Kalawao</b> ...	1 25
Large Yellow Dutch or Strasburg.....	<b>Kanabec</b> ...	1 25
Yellow Danvers.....	<b>Kane</b> .....	1 00
Yellow Globe Danvers ( <i>See cut</i> ).....	<b>Karnes</b> .....	1 25
<b>Michigan Yellow Globe</b> .....	<b>Kauai</b> .....	1 25
Southport Yellow Globe.....	<b>Keith</b> .....	1 25
<b>Mammoth Yellow Spanish or Prizetaker</b> .....	<b>Kennebec</b> ...	1 25
White Portugal ( <i>American Silverskin</i> ).....	<b>Kenton</b> ...	1 75
<b>White Globe</b> .....	<b>Kern</b> .....	2 00

### IMPORTED VARIETIES

<b>Extra Early Barletta</b> .....	<b>Keokuk</b> ....	2 25
<b>Queen, very early</b> .....	<b>Kershaw</b> ...	2 00
Early Neapolitan Marzajola.....	<b>Keweenaw</b> ..	1 50
Giant White Italian Tripoli.....	<b>Kingman</b> ...	1 50
Mammoth Silver King.....	<b>Kiowa</b> .....	1 50



Yellow Globe Danvers



Thomas Laxton

(See page 20)

## PARSLEY

	Tel. Cipher	Per Lb.
Plain .....	<b>Kittitas</b> ...	\$0 40
<b>Champion Moss Curled</b> .....	<b>Klamath</b> ..	50
<b>Short Thick Rooted</b> .....	<b>Knox</b> .....	50

## PARSNIP

Long White Dutch or Sugar .....	<b>Kossuth</b> ...	35
<b>Hollow Crown</b> or Guernsey .....	<b>Laclede</b> ....	35

## PEAS

Not less than 10 lbs. at 100 lb. rate.

Wrinkled varieties marked thus\*.

## FIRST EARLY AND EARLY SORTS

	Tel. Cipher	Per Lb.	Per 100 Lbs
Ferry's First and Best .....	<b>Lagrange</b> ..	\$0 18	\$16 00
<b>Earliest of All or Alaska</b> .....	<b>Lamar</b> .....	20	18 00
* <b>Thomas Laxton</b> . ( <i>See cut, page 19</i> ) .....	<b>Lamoille</b> ..	20	17 00
* <b>Gradus</b> .....	<b>Lancaster</b> ..	22	20 00
* <b>American Wonder</b> .....	<b>Langlade</b> ..	20	17 00
* <b>Nott's Excelsior</b> .....	<b>Laporte</b> ....	20	17 00
* <b>Laxtonian</b> .....	<b>Larne</b> .....	22	20 00
* <b>Premium Gem</b> (Improved Little Gem) .....	<b>Lasalle</b> ....	20	17 00
* <b>Little Marvel</b> .....	<b>Latimer</b> ....	22	20 00

## SECOND EARLY SORTS

* <b>McLean's Advancer</b> .....	<b>Latah</b> .....		Sold out
* <b>Yorkshire Hero</b> .....	<b>Laurel</b> ....	18	15 00
* <b>Bliss' Everbearing</b> .....	<b>Lavaca</b> ....	18	15 00
* <b>Green Admiral</b> .....	<b>Lehigh</b> ....		Sold out
* <b>Duke of Albany</b> .....	<b>Leflore</b> ....	18	15 00
* <b>Telephone</b> .....	<b>Lemhi</b> .....	18	15 00
* <b>Admiral Beatty</b> .....	<b>Lenawee</b> ..	18	15 00
* <b>Alderman</b> .....	<b>Leslie</b> ....	18	15 00

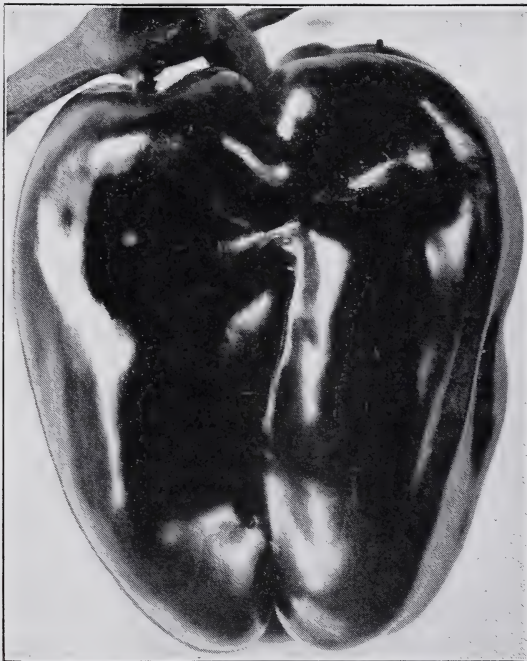
## LATER SORTS

* <b>Improved Stratagem</b> .....	<b>Letcher</b> ....	18	16 00
* <b>Dwarf Champion</b> .....	<b>Liberty</b> ....	18	15 00
* <b>Horsford's Market Garden</b> .....	<b>Lipscomb</b> ..		Sold out
Melting Sugar ( <i>edible pods</i> ) .....	<b>Logan</b> ....	20	18 00
* <b>Champion of England</b> .....	<b>Lorain</b> ....	17	14 00
Large White Marrowfat ( <i>hand picked</i> ) .....	<b>Louisa</b> ....	13	10 00
Large Blackeye Marrowfat ( <i>hand picked</i> ) .....	<b>Lowndes</b> ..	13	10 00



## PEPPER

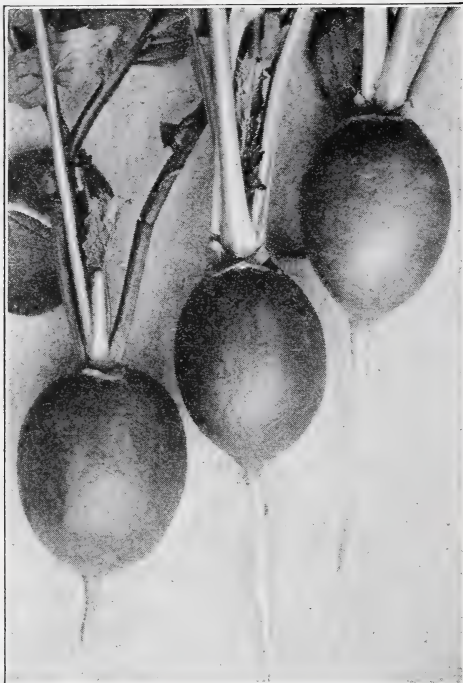
	Tel. Cipher	Per Lb.
Tabasco.....	Lyden....	\$5 00
Red Cherry.....	Lyman....	2 50
Red Chili.....	Lyon.....	2 50
Long Red Cayenne.....	McCook....	2 00
Large Bell or Bull Nose.....	McKean....	2 50
Royal King.....	McKenzie..	2 50
Ruby King.....	McKinley..	2 50
Pimiento.....	McLeod....	2 50
Giant Crimson.....	McLennan..	4 00
Chinese Giant.....	McMahan..	4 00
Large Sweet Spanish.....	McMinn....	2 50



Giant Crimson

## PUMPKIN

	Tel. Cipher	Per Lb.
Pie.....	McNairy....	\$0 50
Sugar or New England Pie.....	Macomb....	50
Large Yellow.....	Macoupin..	35
Green Striped Cushaw.....	Madera....	75
Sweet Cheese or Kentucky Field.....	Madison....	35



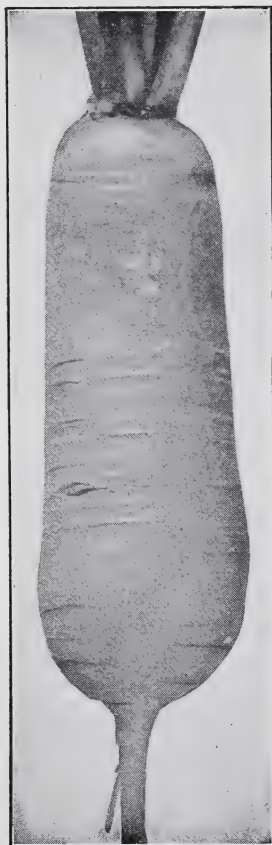
Early Scarlet Globe

## RADISH

	Tel. Cipher	Per Lb.
<b>Non Plus Ultra</b> or Early Deep Scarlet Turnip, Forcing.....	<b>Malheur</b> ...	\$0 50
Blood Red Turnip, Forcing.....	<b>Mahaska</b> ..	50
<b>Early Scarlet Globe</b> ( <i>See cut</i> ).....	<b>Manistee</b> ..	50
Early Scarlet Turnip, White Tipped, Forcing.....	<b>Marengo</b> ...	50
Early Deep Scarlet, Olive Shaped, Short Leaf.....	<b>Maries</b> ..	50
Early White Turnip.....	<b>Martin</b> ..	50
Early Scarlet Turnip.....	<b>Marion</b> ..	45
<b>Early Scarlet Turnip, White Tipped</b> .....	<b>Marlboro</b> ..	50
<b>French Breakfast</b> .....	<b>Massac</b> ..	45
<b>Crimson Giant Turnip</b> .....	<b>Maui</b> ..	45
Half Long Deep Scarlet.....	<b>Maverick</b> ..	50
Long Brightest Scarlet, White Tipped.....	<b>Mayes</b> ..	45
<b>Early Long Scarlet, Short Top, Improved</b> .....	<b>Meagher</b> ...	45
Wood's Early Frame.....	<b>Medina</b> ...	45
Cincinnati Market.....	<b>Meigs</b> ..	50
<b>Improved Chartier or Shepherd</b> .....	<b>Meniffee</b> ..	45
<b>Early Golden Yellow Oval</b> .....	<b>Mercer</b> ..	50
<b>Icicle</b> .....	<b>Meyer</b> ..	45
Long White Vienna or Lady Finger.....	<b>Mesa</b> ..	45
Golden Globe.....	<b>Mills</b> ..	Crop failed
Large White Summer Turnip.....	<b>Miner</b> ..	50
<b>White Strasburg</b> .....	<b>Millard</b> ..	45
<b>Early White Giant Summer</b> .....	<b>Midland</b> ...	50

## RADISH—Continued

	WINTER VARIETIES	Tel. Cipher	Per Lb.
<b>Scarlet China.</b>	.....	<b>Mitchell</b> ...	\$0 45
<b>Celestial.</b>	Roots long, cylindrical with beautiful white skin and flesh; quality excellent.....	<b>Modoc</b> .....	50
California Mammoth White China.....		<b>Mono</b> .....	50
Round Black Spanish.....		<b>Monroe</b> ....	50
<b>Half Long Black Winter.</b>	Roots half long, grayish black; flesh white, crisp, pungent and well flavored.....	<b>Montcalm</b> ..	55
Long Black Spanish.....		<b>Montour</b> ...	45



Scarlet China



Celestial

## RHUBARB

Rhubarb or Pie Plant.....	Tel. Cipher	Per Lb.
Rhubarb or Pie Plant Roots..... \$7.50 per 100 .....	<b>Moore</b>	\$0 75
	<b>Morgan</b>	

## ROQUETTE

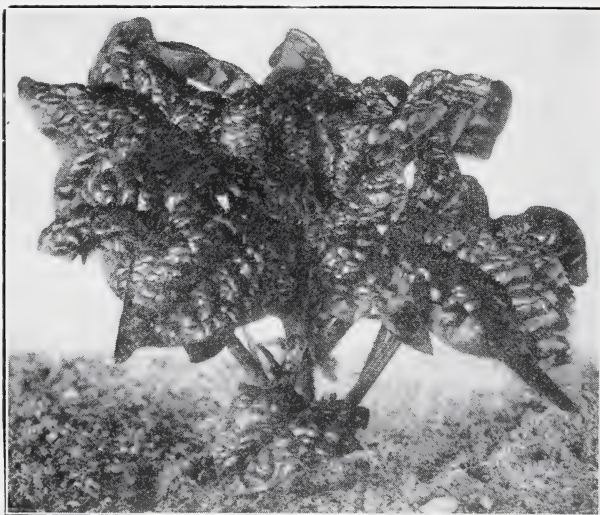
A hardy annual used like mustard for salads..... **Morrison**... 1 00

## SALSIFY or Vegetable Oyster

Mammoth Sandwich Island..... **Morton**.... 1 75

## SORREL

Large Leaved French..... **Moultre**... 1 00



Savoy Leaved

## SPINACH

	Tel. Cipher	Per Lb.	Per 100 Lbs.
<b>Savoy Leaved</b> or Bloomsdale. ( <i>See cut</i> ).....	<b>Murray</b> .....	\$0 18	\$14 00
Broad Flanders.....	<b>Nance</b> .....	18	14 00
Improved Thick Leaved ( <i>Monstrous Viroflay</i> ).....	<b>Natrona</b> .....	18	14 00
<b>Early Giant Thick Leaved</b> .....	<b>Nash</b> .....	18	14 00
<b>Victoria</b> .....	<b>Navarro</b> .....	20	15 00
<b>King of Denmark</b> or Antvorskov. Undoubtedly the most valuable introduction of spinach in recent years. ( <i>See cut on back of cover</i> ).....	<b>Neosho</b> .....	35	30 00
<b>Long Season</b> .....	<b>Nelson</b> .....	20	15 00
Long Standing.....	<b>Nemaha</b> .....	20	15 00
<b>Long Standing Prickly</b> .....	<b>Neshoba</b> .....	20	15 00
New Zealand. ( <i>Tetragonia</i> ).....	<b>Newberry</b> ..	50	

## SQUASH

## SUMMER SORTS

	Tel. Cipher	Per Lb.
Long Island White Bush.....	<b>Noble</b> .....	\$0 60
Early White Bush Scallop.....	<b>Nicholas</b> ...	60
<b>Mammoth White Bush Scallop</b> .....	<b>Newton</b> ....	75
Early Yellow Bush Scallop.....	<b>Nolan</b> .....	60
<b>Mammoth Summer Crookneck</b> .....	<b>Nowata</b> ....	75
Summer Crookneck.....	<b>Nuckolls</b> ..	60
Italian Vegetable Marrow ( <i>Cocozella di Napoli</i> ) .....	<b>Nye</b> .....	Sold out

## AUTUMN AND WINTER SORTS

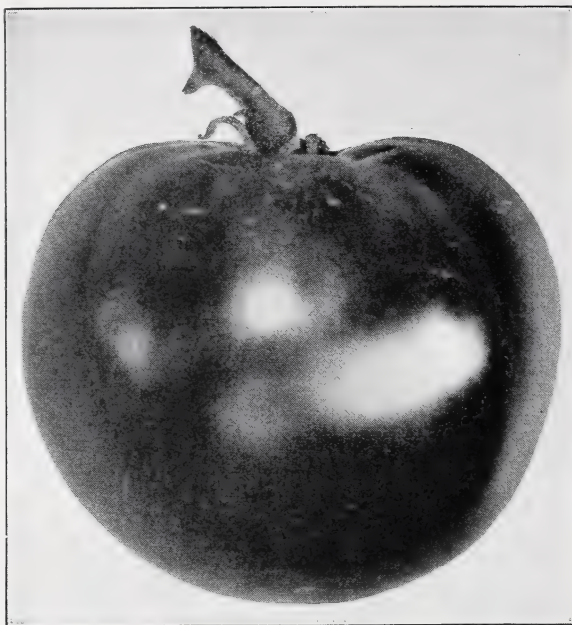
<b>Delicious.</b> ( <i>See cut</i> ).....	<b>Oceana</b> .....	60
Boston Marrow.....	<b>Ogle</b> .....	50
<b>Golden Hubbard</b> .....	<b>Okfuskee</b> ..	60
<b>Hubbard</b> .....	<b>Okmulgee</b> ..	60



Delicious

## TOBACCO

	Tel. Cipher	Per Oz.	Per Lb.
Sterling.....	<b>Oneida</b> ...	\$0 40	\$4 00
Sweet Oronoco.....	<b>Orleans</b> ...	40	4 00
<b>White Burley</b> .....	<b>Osborne</b> ...	25	2 50
Bradley Broad Leaf.....	<b>Osceola</b> ...	40	4 00
Persian Rose.....	<b>Otero</b> ....	50	5 00
Big Havana.....	<b>Otsego</b> ...	50	5 00
Connecticut Seed Leaf.....	<b>Overton</b> ...	25	2 50
<b>Havana</b> .....	<b>Owsley</b> ...	25	2 50



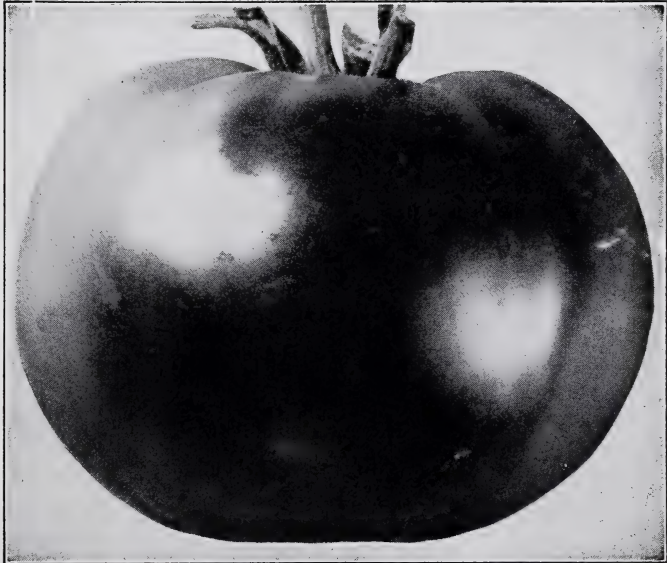
Avon Early

## TOMATO

	Tel. Cipher	Per Lb.
<b>Earliana</b> .....	<b>Oxford</b> .....	\$2 50
<b>Avon Early.</b> The best extra early, scarlet fruited variety. (See cut).....	<b>Owyhee</b> ...	4 00
<b>John Baer.</b> Extra early, scarlet fruited, hardy and productive. Shippers should try it.....	<b>Ozark</b> .....	2 50
<b>Bonny Best</b> .....	<b>Panola</b> .....	2 50
<b>Chalk's Early Jewel</b> .....	<b>Page</b> .....	2 50
<b>Cooper's Special.</b> A new semi-dwarf, purple fruited variety. Fruits globe shaped and very early maturing. Recommended as a good shipping sort.....	<b>Palo</b> .....	8 00
<b>Gulf State Market.</b> The earliest good purple tomato. Unequalled as a shipping sort. (In 1-oz. sealed packets, per oz. 50c).....	<b>Paisley</b> ...	6 00
<b>Early Detroit</b> .....	<b>Pacific</b> .....	4 00
<b>Acme.</b> Known also as Essex Early Hybrid.....	<b>Pamlico</b> ...	2 25
<b>Early Michigan</b> .....	<b>Parker</b> .....	2 50
<b>Livingston's Globe</b> .....	<b>Patrick</b> ....	4 00
<b>Beauty</b> .....	<b>Pawnee</b> ....	2 50

## TOMATO—Continued

	Tel. Cipher	Per Lb.
<b>Improved Trophy</b> .....	<b>Pemiscot</b> ..	<b>\$2 50</b>
<b>Greater Baltimore</b> .....	<b>Pepin</b> .....	<b>2 50</b>
<b>Stone.</b> Our stock is distinctly superior to most of that offered under this name; being more uniform, better colored and larger. ( <i>See cut</i> ) .....	<b>Phelps</b> .....	<b>2 00</b>
<b>Ponderosa</b> .....	<b>Piatt</b> .....	<b>5 00</b>
<b>Dwarf Stone</b> .....	<b>Pike</b> .....	<b>3 00</b>
<b>Dwarf Champion</b> .....	<b>Pinal</b> .....	<b>3 25</b>
<b>Golden Queen</b> .....	<b>Platte</b> .....	<b>2 50</b>
<b>Peach</b> .....	<b>Piute</b> .....	<b>3 00</b>
<b>White Apple</b> .....	<b>Plymouth</b> ..	<b>3 00</b>
<b>Red Pear</b> .....	<b>Polk</b> .....	<b>3 00</b>
<b>Yellow Pear</b> .....	<b>Pontotoc</b> ..	<b>3 00</b>
<b>Yellow Plum</b> .....	<b>Portage</b> ...	<b>3 00</b>
<b>Red Cherry</b> .....	<b>Posey</b> .....	<b>3 00</b>
<b>Yellow Cherry</b> .....	<b>Powell</b> ....	<b>3 00</b>
<b>Yellow Husk or Ground Cherry</b> .....	<b>Prairie</b> ....	<b>3 00</b>



Stone



Purple Top White Globe

## TURNIP

## WHITE FLESHED SORTS

	Tel. Cipher	Per Lb.
<b>Extra Early White Milan</b> .....	<b>Preble</b> .....	\$0 50
<b>Extra Early Purple Top Milan.</b> Roots purple-red on upper portion, white below, smooth, flat; flesh mild, sweet and tender. Well adapted for forcing.....	<b>Presidio</b> ...	50
<b>White Egg.</b> An early, oval or egg-shaped variety with smooth, clear white roots of medium size; flesh fine grained and sweet.....	<b>Prowers</b> ...	30
<b>Early White Flat Dutch, Strap Leaved.</b> A most excellent early garden variety. Roots medium sized, flat; color white. Very early; sweet and tender. It is desirable for table use.....	<b>Pueblo</b> ....	25
<b>Early Purple Top, Strap Leaved.</b> Very extensively used for the table. Roots flat, of medium size, purple or dark red above ground, white below. Flesh white, fine grained and tender.....	<b>Putnam</b> ...	25
<b>Purple Top White Globe.</b> The roots are of excellent quality and are suitable for the table as well as for stock feeding. (See cut) .....	<b>Queens</b> ....	30



## TURNIP—Continued

## WHITE FLESHED SORTS

	Tel. Cipher	Per Lb.
Cow Horn or Long White. Roots long, often twelve to fifteen inches; flesh fine grained and well flavored.....	<b>Rabun</b> .....	\$0 35
Large White Norfolk.....	<b>Rains</b> .....	25
Pomeranean White Globe.....	<b>Ralls</b> .....	25
Seven Top, <i>for turnip greens</i> .....	<b>Ransom</b> .....	75
<b>Southern Prize</b> .....	<b>Ravall</b> .....	80

## YELLOW FLESHED SORTS

Large Amber Globe. Roots large, globular; skin clear yellow except the top which is tinged with green. Flesh light yellow, fine grained and sweet.....	<b>Ray</b> .....	35
Yellow Globe.....	<b>Redwood</b> .....	35
<b>Yellow Stone.</b> Roots of medium size, globular; skin smooth, attractive pale yellow. Flesh crisp, very tender and of fine quality ( <i>See cut</i> ).....	<b>Refugio</b> .....	35
<b>Orange Jelly</b> or Golden Ball.....	<b>Renville</b> .....	30
Purple Top Yellow Aberdeen.....	<b>Rhea</b> .....	30



Yellow Stone



Bangholm

## RUTA BAGA OR SWEDE

	Tel. Cipher	Per Lb.
<b>American Purple Top or Improved Long Island</b> .....	<b>Richmond</b> .....	\$0 30
<b>Bangholm Swede</b> .....	<b>Rolette</b> .....	25
<b>Carter's Imperial Purple Top</b> .....	<b>Ritchie</b> .....	25
<b>D. M. Ferry &amp; Co.'s Imp'd Purple Top Yellow</b> .....	<b>Roanoke</b> .....	30
<b>Drummond's</b> .....	<b>Rockdale</b> .....	30
<b>Monarch or Tankard</b> .....	<b>Rich</b> .....	35
<b>Sutton's Champion</b> .....	<b>Runnell</b> .....	25
<b>Sweet Perfection White. Absolutely neckless</b> .....	<b>Sabine</b> .....	Sold out
<b>Universal or Canadian Gem</b> .....	<b>Riley</b> .....	Sold out
<b>White or Sweet Russian</b> .....	<b>Russell</b> .....	25
<b>Yellow Swede</b> .....	<b>Ringgold</b> .....	25

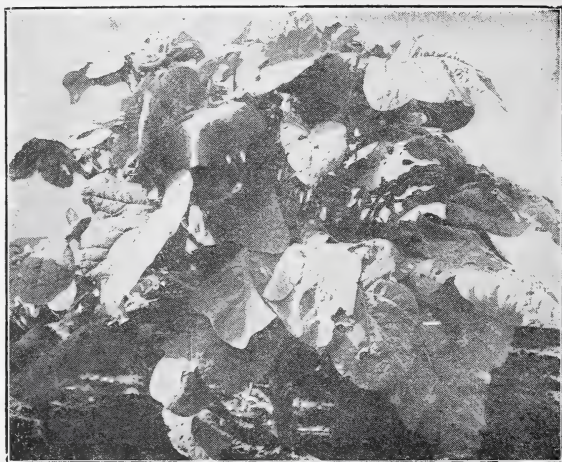
## AROMATIC, MEDICINAL AND POT HERBS

	Tel. Cipher	Per Lb.
Anise.....	<b>Saginaw</b> ...	\$0 75
Balm.....	Oz. 25c. <b>Salem</b>	
Basil, Sweet.....	<b>Saluda</b> ....	1 25
Borage.....	<b>Sanborn</b> ...	75
Caraway.....	<b>Sandoval</b> ..	40
Caraway, for flavoring.....	<b>Sangamon</b> ..	35
Coriander.....	<b>Saratoga</b> ...	40
Coriander, for flavoring.....	<b>Sarpy</b> .....	35
Dill, Mammoth.....	<b>Schley</b> ....	60
Fennel, Sweet.....	<b>Scotland</b> ...	50
Horehound.....	<b>Screven</b> ...	1 25
Hyssop.....	Oz. 25c. <b>Searcy</b>	
Lavender.....	<b>Seminole</b> ..	1 75
Marjoram, Sweet.....	<b>Sequoyah</b> ..	1 25
Rosemary.....	Oz. 40c. <b>Seward</b> ....	4 00
Rue.....	Oz. 25c. <b>Sharkey</b>	
Saffron.....	Oz. 25c. <b>Shasta</b> ....	
Sage, Broad Leaf.....	<b>Shawnee</b> ...	1 25
Savory, Summer.....	<b>Sheridan</b> ..	1 00
Thyme.....	<b>Shoshone</b> ..	2 00
Wormwood.....	<b>Sierra</b> ....	1 50

## GRASS SEED

Prices are subject to fluctuations of the market. Not less than ½ lb. at pound rates nor less than 10 lbs. at 100 lb. rate. Terms net cash ten days.

	Tel. Cipher	Per Lb.	Per 100 Lbs.
Blue Grass, Canadian, fancy cleaned; choicest grade.....	<b>Stone</b> .....	Market	price
Blue Grass, Kentucky, fancy cleaned; choicest grade.....	<b>Stewart</b> ....	"	"
Rye Grass, Perennial ( <i>Pacey's short seeded</i> ).....	<b>Stearns</b> ....	"	"
Red Top, Fancy (cleaned from chaff).....	<b>Snyder</b> ....	"	"
Fescue, Red or Creeping ( <i>European</i> ).....	<b>Stafford</b> ....	"	"
Fescue, Chewing's New Zealand.....	<b>Staffman</b> ..	"	"
Timothy.....	<b>Stephens</b> ..	"	"
Lawn Grass, Extra Fine Mixed.....	<b>Stoddard</b> ..	\$0 50	\$45 00
Lawn Grass, Fine Mixed.....	<b>Stokes</b> ....	35	30 00
Lawn Grass for Shady Locations.....	<b>Stonewall</b>	Prices on application	
Mixtures for Golf Links.....	<b>Story</b> ..	"	"



Rape, Dwarf Essex

## CLOVER

	Tel. Cipher	Per 100 Lbs.
Alfalfa or Lucerne. Choicest domestic grown.....	Stutsman	Market price
Alfalfa, Grimm's.....	Suffolk	" "
Alsike or Swedish.....	Sullivan	" "
Mammoth or Large Red.....	Summers	" "
Medium Red or June.....	Summer	" "
White Dutch, <i>choice</i> .....	Sutter	" "

## MISCELLANEOUS FARM SEEDS

Rape, Dwarf Essex, <i>for sowing</i> . (See cut).....	Terry	Market price
Sunflower, Large Russian.....	Tioga	" "
Sorghum (Sugar Cane), Albaugh Early.....	Texas	" "
" " " Early Orange.....	Thomas	" "

## BIRD SEEDS

The seeds quoted below are for feeding purposes only, not for planting.

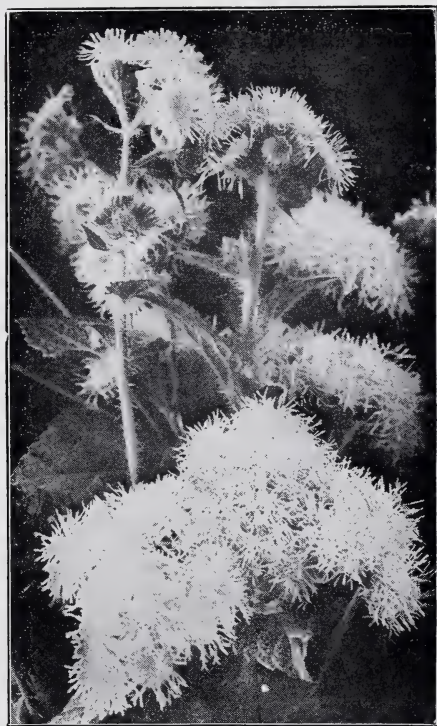
Canary, <i>re-cleaned</i> .....	Tompkins	Market price
Hemp.....	Toombs	" "
Lettuce.....	Towner	" "
Maw.....	Traill	" "
Rape.....	Trigg	" "
Mixed Bird Seed.....	Trinity	" "

All prices on this page are subject to fluctuations of the market. Not less than 10 lbs. at 100 lb. rate. Terms net cash ten days.

# A SELECTED LIST OF FLOWER SEEDS IN BULK

We will not sell less than 1 oz. of sorts priced at 20c per oz. or under but we will put up  $\frac{1}{2}$  oz. of seeds priced at 25c per oz. and over;  $\frac{1}{4}$  oz. of seeds priced at 75c per oz. and over;  $\frac{1}{8}$  oz. of seeds priced at \$2.00 per oz. and over.

Not less than  $\frac{1}{2}$  pound at the pound rate. Less than  $\frac{1}{4}$  pound will be charged at the ounce rate.



**Ageratum**

	Per Oz.	Per $\frac{1}{4}$ Lb.	Per Lb.
Acroclinium, Album.....	\$0 20	\$0 60	\$2 00
"    Roseum.....	20	60	2 00
"    Mixed.....	15	40	1 50
Ageratum Mexicanum.....	20	60	2 00
"    Dwarf White.....	30	90	3 00
"    "    Blue.....	30	90	3 00
"    "    Mixed.....	25	75	2 50

	Per Oz.	Per ¼ Lb.	Per Lb.
Alyssum, Sweet (Maritimum).....	\$0 15	\$0 40	\$ 1 50
“ Little Gem (Maritimum Compactum).....	20	60	2 00
“ Carpet of Snow (Maritimum Procumbens).....	35	1 00	3 50
“ Lilac Queen.....	35	1 00	3 50
Amaranthus tricolor (Joseph's Coat).....	25	75	2 50
Arabis, Alpina.....	35		
Arctotis Grandis.....	50		
Asparagus, Sprengeri.....	\$0.80 per 1000 seeds		
“ Verticillatus.....	1 50		
Aster, Queen of the Market, Crimson.....	60	1 75	6 00
“ “ “ “ “ Lavender.....	60	1 75	6 00
“ “ “ “ “ Light Blue.....	60	1 75	6 00
“ “ “ “ “ Pink.....	60	1 75	6 00
“ “ “ “ “ Purple.....	60	1 75	6 00
“ “ “ “ “ Rose.....	60	1 75	6 00
“ “ “ “ “ White.....	60	1 75	6 00
“ “ “ “ “ Mixed.....	60	1 75	6 00
“ Upright or Imperial Daybreak.....	1 00	2 75	10 00
“ “ “ “ Purity.....	1 00	2 75	10 00
“ Late Upright, Crimson.....	80	2 25	8 00
“ “ “ “ Flesh Pink.....	80	2 25	8 00
“ “ “ “ Lavender.....	80	2 25	8 00
“ “ “ “ Purple.....	80	2 25	8 00
“ “ “ “ Rose.....	80	2 25	8 00
“ “ “ “ White.....	80	2 25	8 00
“ “ “ “ Mixed.....	80	2 25	8 00
“ King, Crimson.....	90	2 50	9 00
“ “ “ “ Lavender.....	90	2 50	9 00
“ “ “ “ Pink.....	90	2 50	9 00
“ “ “ “ Rose.....	90	2 50	9 00
“ “ “ “ Violet.....	90	2 50	9 00
“ “ “ “ White.....	90	2 50	9 00
“ “ “ “ Mixed.....	90	2 50	9 00
“ Giant Crego or Comet, Crego Pink.....	80	2 25	8 00
“ “ “ “ “ Crimson.....	80	2 25	8 00
“ “ “ “ “ Lavender.....	80	2 25	8 00
“ “ “ “ “ Light Blue.....	80	2 25	8 00
“ “ “ “ “ Purple.....	80	2 25	8 00
“ “ “ “ “ Rose.....	80	2 25	8 00
“ “ “ “ “ White.....	80	2 25	8 00
“ “ “ “ “ Mixed.....	75	2 25	7 50
“ Ferry's Late Branching, Crimson.....	75	2 25	7 50
“ “ “ “ “ Heart of France.....	80	2 25	8 00
“ “ “ “ “ Lavender.....	80	2 25	8 00
“ “ “ “ “ Lavender Pink.....	80	2 25	8 00
“ “ “ “ “ Peerless Pink.....	80	2 25	8 00
“ “ “ “ “ Purple.....	80	2 25	8 00
“ “ “ “ “ Silvery Pink.....	80	2 25	8 00
“ “ “ “ “ Tyrian Rose.....	80	2 25	8 00
“ “ “ “ “ White.....	80	2 25	8 00
“ “ “ “ “ Mixed.....	70	2 00	7 00
“ Finest Mixed.....	50	1 40	5 00
Australian Pea Vine.....	30	90	3 00
Balloon Vine (Cardiospermum halicacabum).....	10	30	1 00



Candytuft

	Per Oz.	Per ¼ Lb.	Per Lb.
Balsam, Double or Camellia Flowered, Pure White	\$0 40	\$1 10	\$4 00
“ “ “ “ “ Dark Red	30	90	3 00
“ “ “ “ “ Solferino	30	90	3 00
“ “ “ “ “ Dwarf Mixed	25	75	2 50
“ “ “ “ “ Tall Mixed	20	60	2 00
Calendula, Double Lemon Queen	15	40	1 25
“ “ Meteor	10	30	1 00
“ “ Orange King	15	40	1 25
“ “ Mixed	10	30	1 00
Canary Bird Flower	20	60	2 00
Candytuft, Fragrant White	15	40	1 50
“ Lilac	25	75	2 50
“ Purple	25	75	2 50
“ Rocket (Giant Empress)	20	60	2 00
“ Rose Carmine	25	75	2 50
“ White	10	30	1 00
“ Fine mixed	10	30	1 00
Canna, finest large-flowering, mixed	15	40	1 50
Canterbury Bell, Single Mixed	25	75	2 50
“ “ Double Blue	1 25	3 25	12 00
“ “ Rose	1 25	3 25	12 00
“ “ White	1 25	3 25	12 00
“ “ Mixed	80	2 25	8 00
“ “ Calycanthema Mixed	1 25		



		Celosia Childsi		Per Oz.	Per 1 Lb.	Per Lb.
Cardinal Climber				\$0 50	\$ 40	\$5 00
Carnation, Grenadin, Double Red				1 25		
"	"	"	White	1 25		
"	Double dwarf Vienna, mixed, early flowering.			1 00	2 75	10 00
"	Marguerite, finest mixed			60	1 75	6 00
"	Double Picotee Fine Mixed			1 25	3 25	12 00
"	Double Choice Mixed			1 00	2 75	10 00
Castor Bean, Sanguineus				10	25	75
"	"	"	Zanzibariensis	10	25	75
"	"	"	Mixed	10	25	75
Celosia	Childsi crimson			1 00	3 25	12 00
"	Pyramidalis Plumosa Mixed			30		
"	Glasgow Prize			1 25		
"	Dwarf Rose			1 25		
"	"	"	Yellow	1 25		
"	cristata (Cockseomb) dwarf mixed			80	2 25	8 00
Centaurea, Imperialis	Lavender			45	1 25	4 50
"	"	"	Purple	45	1 25	4 50
"	"	"	Rose	45	1 25	4 50
"	"	"	White	45	1 25	4 50
"	"	"	Mixed	40	1 10	4 00
"	Suaveolens Yellow			45	1 25	4 50
"	Cyanus (Bachelor's Button) mixed			15	40	1 50
"	"	"	Double Blue	25	75	2 50
"	"	"	Rose	25	75	2 50
"	"	"	White	35	1 00	3 50
"	"	"	Mixed (Bachelor's Button)	20	60	2 00





Cosmos

	Per Oz.	Per ¼ Lb.	Per Lb.
Cheiranthus Allioni.....	\$0	40	
Chrysanthemum, Evening Star.....	20		
“ White Gloria.....	25		
“ Carinatum Eclipse.....	25		
“ “ Mixed.....	20	\$0 60	\$2 00
“ Coronarium Double Mixed.....	15	40	1 50
“ Mixed.....	15	40	1 50
Cobaea Scandens, violet-blue.....	30	90	3 00
Columbine (Aquilegia) Californica hybrida.....	2	00	
“ “ Coerulea Hybrida.....	50		
“ “ Single Mixed.....	60		
“ “ Double Mixed.....	40	1 10	4 00
Coreopsis or Calliopsis, Tinctoria, fine mixed.....	10	25	80
“ “ “ Golden Ray.....	40	1 10	4 00
“ “ “ Hybrida Double Mixed.....	15	40	1 25
“ “ “ Lanceolata Grandiflora.....	20	60	2 00
Cosmos, Early Flowering, Crimson.....	30	90	3 00
“ “ “ Pink.....	30	90	3 00
“ “ “ White.....	30	90	3 00
“ “ “ Mixed.....	15	40	1 50
“ hybrida, Giant Pink.....	20	60	2 00
“ “ “ White.....	20	60	2 00
“ “ “ Mixed.....	10	30	1 00
Cypress Vine (Ipomœa quamoclit) Scarlet.....	15	55	1 75
“ “ “ White.....	15	55	1 75
“ “ “ Mixed.....	15	40	1 50
Dahlia, finest single mixed.....	30	90	3 00

	Per Oz.	Per ¼ Lb.	Per Lb.
Daisy, double Rose ( <i>Longfellow</i> )	\$1 75		
“ “ White	1 75		
“ “ Mixed	1 50	\$3 75	\$14 00
Datura Wrighti	20	60	2 00
“ chlorantha fl. pl., double yellow	20	60	2 00
“ Mixed	20	60	2 00
Didiscus Coeruleus	2 00		
Dimorphoteca Aurantiaca	60		
Dwarf Morning Glory ( <i>Convolvulus minor</i> ), Mixed	10	20	50
Eschscholtzia, Aurantiaca ( <i>True California Poppy</i> )	15	40	1 25
“ Carmine King	50	1 40	5 00
“ Mandarin	30	90	3 00
“ Mikado	50	1 40	5 00
“ Scarlet Beauty	1 50	4 50	15 00
“ Mixed, finest colors	15	40	1 25
“ Bush ( <i>Hunnemannia</i> )	35		
Euphorbia Marginata	35	1 00	3 50
Forget-Me-Not, blue ( <i>Myosotis Alpestris</i> )	30	90	3 00
Four O’Clock ( <i>Mirabilis</i> , <i>Marvel of Peru</i> ) Red	10	30	1 00
“ “ White	10	30	1 00
“ “ White, Red Striped	10	30	1 00
“ “ Mixed	10	25	80
Foxglove ( <i>Digitalis</i> ) fine mixed	40	1 10	4 00
“ “ Ivery’s Spotted	40	1 10	4 00
“ “ Campanulata Monstrosa, mixed	1 00	2 75	10 00
Gaillardia Picta	25	75	2 50
“ Grandiflora	75		
“ Picta Lorenziana	30		
Globe Amaranth, Purple	15	40	1 50
“ “ White	15	40	1 50
“ “ Striped	15	40	1 50
“ “ Mixed	10	30	1 00
Godetia, fine mixed	25	75	2 50
Gourds, Apple shaped, early	15	40	1 50
“ Bottle	15	40	1 50
“ Calabash	15	40	1 40
“ Corsican	15	40	1 40
“ Dish Cloth	15	40	1 40
“ Hercules’ Club	15	40	1 40
“ Japanese Nest Egg	15	40	1 40
“ Orange (Mock orange)	15	40	1 40
“ Pear shaped, Ringed	15	40	1 40
“ Powder Horn	15	40	1 40
“ Siphon or Dipper	15	40	1 40
“ Mixed	10	35	1 25
Gypsophila, Elegans Large Flowering Pure White	10	20	60
“ “ Mixed	10	25	75
“ Paniculata Double White	3 00		
Helichrysum monstrosum, largest double mixed	30	90	3 00
Heliotrope, Dark Varieties mixed, very choice	1 00	2 75	10 00
Hibiscus Africanus	20		

	Per Oz.	Per ¼ Lb.	Per Lb.
Hollyhock, Early Flowering Mixed	\$0 80	\$2 25	\$8 00
“ Chater's Finest Mixed	65	2 00	6 50
“ Double Blood Red			Sold out
“ “ Deep Rose	1 00		
“ “ Lemon Yellow	1 00		
“ “ Pink	1 00		
“ “ Pure White	1 00		
“ “ Salmon			Sold out
“ “ Choice Mixed	1 00		
“ “ Mixed	80	2 25	8 00



Kochia

	Per Oz.	Per ¼ Lb.	Per Lb.
Humulus Japonicus ( <i>Japanese Hop</i> )	\$0 30		
Hyacinth Bean ( <i>Dolichos lablab</i> ) Alba, white	10	\$0 30	\$1 00
“ “ “ “ Purpurea, purple	10	30	1 00
“ “ “ “ Mixed	10	25	75
Ice Plant ( <i>Mesembryanthemum crystallinum</i> )	25	65	2 00
Ipomœa, Bona Nox ( <i>Evening Glory</i> )	10	30	1 00
“ Coccinea ( <i>Star Ipomœa</i> )	10	30	90
“ Early Flowering Sky Blue	50		
“ Limbata, mixed	10	30	1 00
“ Setosa ( <i>Brazilian Morning Glory</i> )	25	75	2 50
“ Fine Mixed	10	30	1 00
Job's Tears ( <i>Coix lachryma</i> )	10	15	40
Kochia Childsi	10	25	75
Lantana French Hybrids	20	60	2 00
Larkspur, Double tall stock flowered, Dark Blue	30	90	3 00
“ “ “ “ Lustrous Carmine	40	1 10	4 00
“ “ “ “ Shell Pink	30	90	3 00
“ “ “ “ Sky Blue	30	90	3 00
“ “ “ “ White	30	90	3 00
“ “ “ “ Mixed	20	60	2 00
“ ( <i>Delphinium</i> ) Belladonna	2 50		
“ “ Bellamosum	3 00		
“ “ Hybrid Large Flowering Mixed	1 50		



Marigold

	Per Oz.	Per ¼ Lb.	Per Lb.
Linum grandiflorum, rubrum (Scarlet Flax).....	\$0 15	\$0 40	\$ 1 25
Lobelia Erinus, Crystal Palace.....	1 00	2 75	10 00
“ “ True Blue.....	1 25	3 25	12 00
“ “ Gracilis.....	30	90	3 00
Love-in-a-mist (Nigella Damascena) Double Blue.....	15	40	1 25
Lupin Cruikshanki.....	15	40	1 25
Marigold African, double tall, Lemon Queen.....	75	2 25	7 50
“ “ “ “ Orange Prince.....	75	2 25	7 50
“ “ “ “ Mixed.....	20	60	2 00
“ French, Tagetes Signata Pumila.....	50	1 40	5 00
“ “ Double Dwarf Golden Ball.....	30	90	3 00
“ “ “ “ Gold Striped.....	25		
“ “ “ “ Pale Yellow.....	30		
“ “ “ “ Mixed.....	25	75	2 50
“ Single Legion of Honor.....	35		
Maurandia mixed.....	1 25		
Mignonette, Sweet (Reseda odorata grandiflora).....	10	30	1 00
“ Machet.....	20	60	2 00
“ “ White.....	90		
“ Goliath Red.....	60		
Mimulus Punctatus (Monkey Flower).....	2 50		
Momordica Charantia (Balsam Pear).....	25	75	2 50
“ Balsamina (Balsam Apple).....	25	75	2 50
Moon Flower (Ipomoea Grandiflora Alba).....	25	75	2 50

	Per Oz.	Per ¼ Lb.	Per Lb.
Morning Glory, Aurora	\$0 10	\$0 25	\$0 80
“ “ (Convolvulus major) Crimson	10	25	80
“ “ “ “ Blue	10	25	80
“ “ “ “ Purple	10	25	80
“ “ “ “ Striped	10	25	80
“ “ “ “ White	10	25	80
“ “ “ “ Mixed		15	40
“ “ Giant Japanese, Extra Select mixed	15	40	1 25
Mourning Bride (Scabiosa) double, Blue	40	1 10	4 00
“ “ “ “ Maroon	40	1 10	4 00
“ “ “ “ Pink	40	1 10	4 00
“ “ “ “ Red	40	1 10	4 00
“ “ “ “ Yellow	40	1 10	4 00
“ “ “ “ White	40	1 10	4 00
“ “ “ “ Mixed	30	90	3 00

## Nasturtiums

### Dwarf Varieties

(*Tropaeolum minor*)

	Per Oz.	Per ¼ Lb.	Per Lb.
Aurora	\$0 10	\$0 25	\$0 75
Bronze Colored	10	25	80
Chameleon	10	25	80
Crimson	10	25	80
Empress of India	10	30	90
King Theodore	10	30	90
Pearl	10	25	70
Rose	10	30	90
Scarlet	10	25	70
Schilling's Striped	10	30	1 00
Yellow	10	30	90
Mixed. (Tel. Cipher Itawa)	10	20	60
Nasturtiums, Madame Gunter's Hybrids	10	25	80
Nasturtiums, Trailing Chameleon	10	25	80

### Trailing Varieties

(*Tropaeolum Lobbianum*)

	Per Oz.	Per ¼ Lb.	Per Lb.
Bright Yellow	\$0 10	\$0 25	\$0 80
Brilliant	10	25	80
Chameleon	10	25	80
Chestnut Brown	10	25	80
Giant of Battles	10	25	80
Hemisphaericum	10	25	70
Jupiter	10	25	70
King of the Blacks	10	25	80
Light Yellow, with maroon stain	10	30	90
Queen Wilhelmina	10	25	80
Rose	10	25	80
Spitfire	10	25	80
Mixed. (Tel. Cipher Izard)	10	20	60

	Per Oz.	Per ¼ Lb.	Per Lb.
Nicotiana Affinis	\$0 20	\$0 60	\$2 00
“ Sanderae Mixed	40		

## PANSIES

	Per Oz.	Per ¼ Lb.	Per Lb.
Pansy, Ferry's Superbissima Blotched.....	\$3 00		
“ Giant Flowering Parisian, mixed.....	2 00	\$5 25	\$20 00
“ “ Trimardeau, Mixed.....	1 50	4 00	15 00
“ “ Flowering, Extra Choice Mixed.....	1 75	4 50	17 00
“ Large flowering, Choice Mixed.....	1 25	3 25	12 00
“ Giant Black.....	1 25		
“ “ Light Blue.....	1 25		
“ “ Mahogany.....	1 25		
“ “ White.....	1 25		
“ “ Yellow.....	1 50		
“ Lord Beaconsfield.....	1 00		
“ Navy Blue.....	1 00		
Petunia Hybrida, Dwarf Rosy Morn.....	2 50		
“ “ “ White.....	2 00		
“ “ “ Mixed.....	1 50		
“ “ Countess of Ellsmere.....	1 50		
“ “ General Dodds.....	1 25		
“ “ White.....	1 00		
“ “ Finest Striped and Blotched.....	75	2 25	7 50
“ “ Fine Mixed.....	50	1 40	5 00
“ “ Large Flowered Mixed.....	10 00		
Phlox Drummondii, large flowering, Alba, pure white....	75		
“ “ “ “ Black Warrior, deep maroon.....	75		
“ “ “ “ Isabellina, creamy yellow.....	75		
“ “ “ “ Kermesina alba oculata.....	75		
“ “ “ “ Lilac.....	75		
“ “ “ “ Rosea, rose with distinct eye.....	75		
“ “ “ “ Rosy Chamois.....	75		
“ “ “ “ Scarlet.....	75		
“ “ “ “ Splendens, crimson, pure white eye... ..	75		
“ “ “ “ Violet.....	75		
“ “ “ “ Extra choice mixed..	70	2 00	7 00
Pink, China, double mixed (Dianthus Chinensis).....	25	75	2 50
“ Heddewig's Double Diadem Mixed.....	50	1 40	5 00
“ “ Finest Single Mixed.....	25	75	2 50
“ Double Japan Mixed (Dianthus laciniatus fl. pl.)..	50	1 40	5 00
Poppy, Shirley, extra fine mixed.....	15	40	1 50
“ Tulip Flowered (Papaver glaucum).....	40	1 10	4 00
“ Ryburgh Hybrid.....	1 00		
“ Double Fringed Carnation White.....	20	60	2 00
“ “ “ Red.....	20	60	2 00
“ “ “ Mixed.....	10	25	75
“ “ Paeony White.....	15	40	1 50
“ “ “ Red.....	15	40	1 50
“ “ “ Mixed.....	10	30	1 00
“ “ Choice Mixed.....	10	20	60
“ Single Mixed.....	10	30	1 00
“ Orientale.....	60	1 75	6 00
“ “ Hybrids Mixed.....	70		

	Per Oz.	Per ¼ Lb.	Per Lb.
Portulaca Single Fine Mixed.....	\$0 40	\$1 10	\$ 4 00
“ Double Mixed.....	1 50	4 00	15 00
Primrose, Evening, Lamarekiana.....	15		
Pyrethrum, Parthenifolium Aureum .....	30		
Rhodanthe, Rose.....	40	1 10	4 00
“ White.....	40	1 10	4 00
“ Mixed.....	35	1 00	3 50
Rocket, Purple.....	25		
“ White.....	25		
Rose, Multiflora.....	1 00	2 75	10 00
Salpiglossis, fine mixed hybrid varieties.....	60	1 75	6 00
Salvia Splendens (Flowering Sage).....	1 75	4 75	18 00
“ Fireball.....	2 50	6 50	25 00
Scarlet Runner Beans.....			20
Schizanthus Retusus Mixed.....	1 50		
Sensitive Plant ( <i>Mimosa Pudica</i> ).....	30	90	3 00
Shasta Daisy.....	60	1 75	6 00
Smilax.....	25	75	2 50
Snapdragon, Semi-Dwarf Maroon.....	60		
“ “ “ Pink.....	60		
“ “ “ Scarlet.....	60		
“ “ “ White.....	60		
“ “ “ Yellow.....	60		
“ “ “ Mixed.....	60		
“ Tall Large Flowering, Garnet.....	50		
“ “ “ “ Pink.....	50		
“ “ “ “ Scarlet.....	50		
“ “ “ “ White.....	50		
“ “ “ “ Yellow.....	50		
“ “ “ “ Fine Mixed.....	30	90	3 00
Stock, Beauty of Nice, Crimson.....	1 75	5 00	17 50
“ “ “ “ Deep Blue.....	1 75	5 00	17 50
“ “ “ “ Rose.....	1 75	5 00	17 50
“ “ “ “ Rosy Lilac.....	1 75	5 00	17 50
“ “ “ “ White.....	1 75	5 00	17 50
“ “ “ “ Yellow.....	1 75	5 00	17 50
“ “ “ “ Mixed.....	1 75	5 00	17 50
“ Double Ten Weeks, Blood Red.....	1 75	5 00	17 50
“ “ “ “ Bright Pink.....	1 75	5 00	17 50
“ “ “ “ Purple.....	1 75	5 00	17 50
“ “ “ “ White.....	1 75	5 00	17 50
“ “ “ “ Yellow.....	1 75	5 00	17 50
“ “ “ “ Mixed.....	60	1 75	6 00
Sunflower, Globosus fistulosus, double.....	15	40	1 50
“ Double Chrysanthemum flowered.....	10	30	1 00
“ Stella.....	15	40	1 25
“ Red and Gold. ( <i>Gaillardia Flowered</i> ).....	25		
Sweet Peas, see pages 44, 45, 46, 47.			
Sweet William, Pure White.....	40	1 10	4 00
“ “ Velvet Maroon.....	40	1 10	4 00
“ “ ( <i>Dianthus barbatus</i> ) Single Mixed, fine..	20	60	2 00
“ “ “ “ Double Mixed, extra.....	40	1 10	4 00

	Per Oz.	Per ¼ Lb.	Per Lb.
Verbena hybrida, Pink	\$1 50	\$4 00	\$15 00
“ “ Blue	1 25	3 25	12 00
“ “ Scarlet	1 00		
“ “ Pure White, large	90	2 50	9 00
“ “ Italian Striped	90		
“ “ Fine Mixed, extra choice strain	75	2 25	7 50
Vinca, Pure White	60		
“ Rosea	60		
“ Rosea Alba	60		
“ Mixed	60	1 75	6 00
Wallflower, Early Brown	20	60	2 00
“ Mixed Double, extra fine	2 25		
Zinnia, Giant Double, Crimson	75	2 25	7 50
“ “ Golden Yellow	75	2 25	7 50
“ “ Orange	75	2 25	7 50
“ “ Pink	75	2 25	7 50
“ “ Purple	75	2 25	7 50
“ “ Scarlet	75	2 25	7 50
“ “ White	75	2 25	7 50
“ “ Mixed	50	1 40	5 00
“ Dahlia Flowered Mixed	1 50	4 00	15 00
“ Double Quilled Mixed	1 00	2 75	10 00
“ Lilliput Double Mixed	60		

## SWEET PEAS

Our stocks are absolutely unsurpassed in selection, purity and vitality.

Not less than one-half pound at pound rate. Less than one-fourth pound will be charged at the ounce rate.

### SPRING FLOWERING SPENCER

	Tel. Cipher	Per Oz.	Per ¼ Lb.	Per Lb.
Early Aviator	Walstead	\$0 30	\$0 90	\$3 00
“ Blanche Ferry	Wakita	30	90	3 00
“ Blue Bird	Waldrip	40	1 25	4 50
“ Columbia	Walhond	30	90	3 00
“ Glitters	Walford	30	90	3 00
“ Harmony	Walsh	30	90	3 00
“ Snowflake	Weak	30	90	3 00
“ Zvolanek's Rose	Wilborn	30	90	3 00
Spring Flowering Spencer, Mixed, a choice mixture of the best early flowering varieties	Wauneta	30	90	3 00

### SPENCER VARIETIES

#### BICOLOR, LIGHT

	Tel. Cipher	Per Oz.	Per ¼ Lb.	Per Lb.
Apple Blossom	Yadkin	\$0 20	\$0 60	\$2 00
Blanche Ferry Spencer	Tulare	20	60	2 00
BLUE				
Mrs. Tom Jones	Wellen	20	60	2 00
Wedgwood	Yoncalla	20	60	2 00



## SWEET PEAS—Continued

Our stocks are absolutely unsurpassed in selection, purity and vitality.  
Sweet Peas 10c per oz. unless otherwise stated.  
Not less than one-half pound at pound rate. Less than one-fourth pound will be charged at the ounce rate.

## SPENCER VARIETIES—Continued

	BLUE, LIGHT			
		Tel. Cipher	Per Oz.	Per ¼ Lb. Per Lb.
Colne Valley	Wexford		\$0 20	\$0 60 \$2 00
Margaret Madison	Welaka		20	60 2 00
	BLUE, DARK			
Jack Cornwall V. C.	Wellford		20	60 2 00
	BLUSH PINK			
Valentine	Wellham		20	60 2 00
	CARMINE			
Renown	Washoe		20	75 2 25
	CERISE, PALE			
Illuminator	Ward		20	60 2 00
	CERISE, DEEP			
Fiery Cross	Welling		20	60 2 00
	CERISE, SCARLET			
Royal Scot	Wellston		20	60 2 00
	CREAM			
Dobbie's Cream	Wasatch		20	55 1 75
	CREAM PINK, PALE			
Mrs. Hugh Dickson	Welga		20	60 2 00
Miriam Beaver	Weirz		20	60 2 00
	CREAM PINK, DEEP			
Margaret Atlee	Wekiwa		20	55 1 75
	CRIMSON			
Crimson King	Walton		40	1 10 4 00
King Edward	Watauga		20	60 2 00
	LAVENDER			
Asta Ohn	Yamhill		20	60 2 00
Austin Frederick	Yakima		20	60 2 00
	MARBLED AND WATERED			
Helen Pierce Spencer	Ware		20	75 2 25
	MAROON, DARK			
Warrior	Yell		20	60 2 00
	ORANGE PINK			
George Shawyer	Wallace		20	75 2 25
	ORANGE SCARLET			
The President	Walker		20	60 2 00
Thomas Stevenson	Yetter		20	60 2 00

(See page 46 for mixture of Spencer sweet peas)

## SWEET PEAS—Continued

Our stocks are absolutely unsurpassed in selection, purity and vitality.

Sweet Peas 10c per oz. unless otherwise stated.

Not less than one-half pound at pound rate.

## SPENCER VARIETIES—Continued

## PICOTEE EDGED, BLUE

	Tel. Cipher	Per Oz.	Per ¼ Lb.	Per Lb.
Blue Picotee.....	<b>Tunica</b> .....	\$0 20	\$0 60	\$2 00

## PICOTEE EDGED, PINK

Dainty.....	<b>Washita</b> ...	20	60	2 00
-------------	--------------------	----	----	------

## PINK, PALE

Elfrida Pearson.....	<b>Waskom</b> ...	20	60	2 00
----------------------	-------------------	----	----	------

## PINK, CLEAR

Countess.....	<b>Vance</b> .....	15	40	1 50
---------------	--------------------	----	----	------

## PINK, DEEP

Hawmark Pink.....	<b>Welona</b> ....	20	60	2 00
-------------------	--------------------	----	----	------

## PURPLE

Royal Purple.....	<b>Waukon</b> ...	20	60	2 00
-------------------	-------------------	----	----	------

## ROSE

Rosabelle.....	<b>Waupun</b> ...	20	60	2 00
----------------	-------------------	----	----	------

## SALMON

Stirling Stent.....	<b>Wecota</b> ...	20	60	2 00
---------------------	-------------------	----	----	------

## SCARLET

Scarlet Emperor.....	<b>Wehrum</b> ...	20	55	1 75
----------------------	-------------------	----	----	------

## STRIPED AND FLAKED

Aurora.....	<b>Yankton</b> ...	20	60	2 00
-------------	--------------------	----	----	------

Senator.....	<b>Wagoner</b> ..	20	60	2 00
--------------	-------------------	----	----	------

## WHITE

King White.....	<b>Weld</b> .....	15	40	1 50
-----------------	-------------------	----	----	------

Constance Hinton.....	<b>Twiggs</b> ....	20	60	2 00
-----------------------	--------------------	----	----	------

**CHOICE MIXED.** This mixture has been most carefully grown from our selected stock seed and it will afford a splendid variety of blooms in the widest possible range of desirable colors.

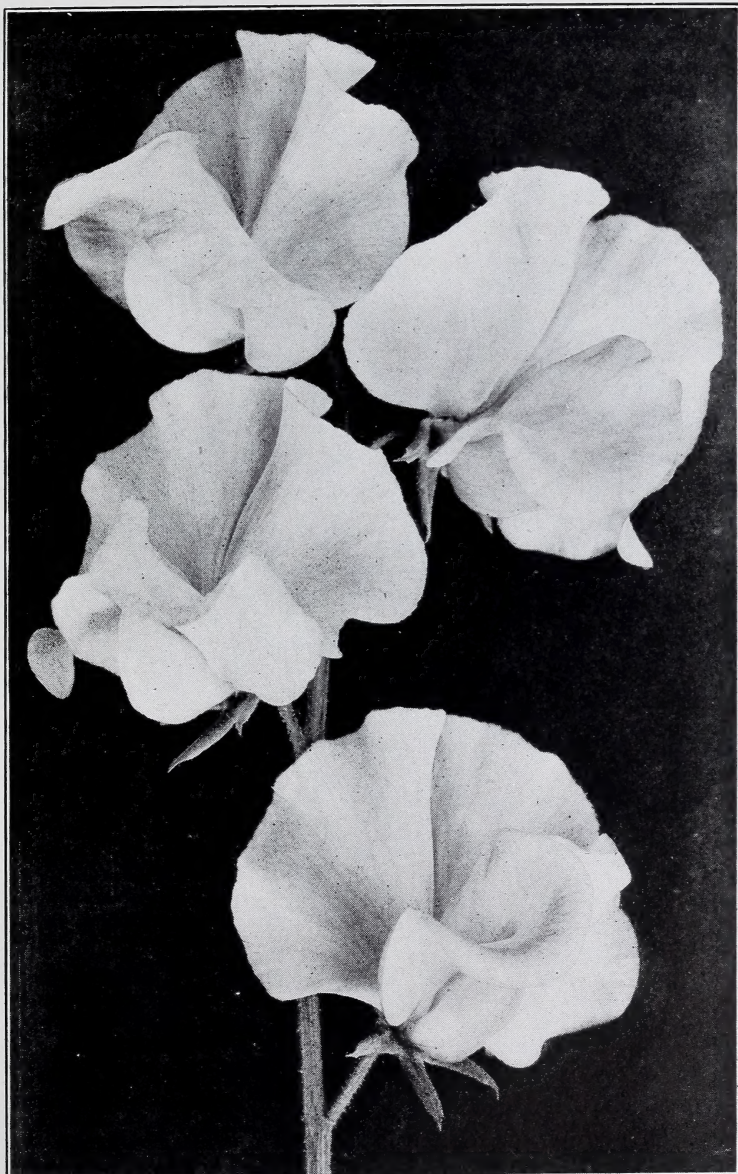
Tel. Cipher Zapata. Per Lb. 50c; Per 100 Lbs. \$45.00

**SPENCERS MIXED.** In this splendid mixture will be found a wide range of colors of this comparatively new class. The flowers are of remarkably large size and wonderfully attractive form.

Tel. Cipher Young. Per Oz. 10c; Per Lb. \$1.00

**FERRY'S SUPERB SPENCERS MIXED.** We make up this magnificent mixture by combining separate named Spencer varieties, each of which our trials have repeatedly shown to be the very best of its class. Unsurpassed as a mixture of this superb class and showing the most desirable range of colors and the finest forms. No better mixture in all the world than this.

Tel. Cipher Zora. Per Oz. 20c; Per Lb. \$2.00



Spencer Sweet Peas

# GARDEN TOOLS

Send for Illustrated and Descriptive Catalogues of Garden Tools for 1925

Packed or boxed ready for shipment, and delivered at express office or depot at Detroit, Mich.

	Tel. Cipher	Price
Planet Jr., No. 3, Hill and Drill Seeder.....	<b>Teho</b> .....	\$13 90
" " 4, Combined Hill and Drill Seeder, Wheel Hoe, Cultivator and Plow.....	<b>Temere</b> .....	14 25
" " 4, Hill and Drill Seeder, Plain (as a drill only).....	<b>Tempsa</b> .....	11 25
" " 5, Hill and Drill Seeder. Built on the same lines as No. 3 Drill, but larger.....	<b>Tenabo</b> .....	15 75
" " 25, Combined Hill and Drill Seeder and Double Wheel Hoe, Cultivator and Plow.....	<b>Teneo</b> .....	16 90
" " 31, Combined Drill Seeder and Wheel Hoe.....	<b>Tenor</b> .....	9 40
" " 11, Double Wheel Hoe.....	<b>Tergo</b> .....	10 90
" " 12, " " ".....	<b>Ternio</b> .....	8 65
" " 13, " " ".....	<b>Tersus</b> .....	6 20
" " 16, Single Wheel Hoe.....	<b>Tetini</b> .....	7 15
" " 17, " " ".....	<b>Texo</b> .....	6 00
" " 18, " " ".....	<b>Theca</b> .....	4 50
" " 19, " " ".....	<b>Thesis</b> .....	4 70
" " 38, " " " Disc Hoe, Cultivator and Plow.....	<b>Theto</b> .....	8 80
The Iron King Seed Drill.....	<b>Tiara</b> .....	11 25
" " " " with Fertilizer Attachment.....	<b>Timeo</b> .....	15 00
Excelsior Weeding Hook.....	<b>Titubo</b> ..... per ten	1 50
Haeltine Hand Weeder and Scraper.....	<b>Toga</b> ..... " "	3 00
Pressed Steel Garden Trowel.....	<b>Tonum</b> ..... " "	1 50

## SEED BAGS

We annually manufacture for our own use millions of Seed Bags and are in a position to offer to the trade first quality ready made bags at prices as reasonable as the same grade of goods can be purchased anywhere.

*Samples of all sizes furnished on application.*

**Printing Extra, at Cost**

No.	Description	Size	Per 1,000
No. 1	Miniature Pockets, Canary.....	$\frac{7}{8}$ x $2\frac{1}{4}$ inches.....	\$ 0 75
" 3	White Coated Paper.....	$2\frac{1}{8}$ x $3\frac{1}{4}$ ".....	85
" 7	" " ".....	$3\frac{1}{8}$ x $4\frac{1}{2}$ ".....	1 50
" 12	" " ".....	4 x $4\frac{3}{4}$ ".....	2 50
" 11	Manila, Gummed.....	$\frac{1}{2}$ oz..... $2\frac{1}{4}$ x $3\frac{1}{2}$ ".....	1 00
" 13	" " ".....	1 oz..... $2\frac{1}{2}$ x $4\frac{1}{4}$ ".....	1 25
" 15	" " ".....	2 oz..... $3\frac{1}{8}$ x $5\frac{1}{2}$ ".....	1 50
" 33	Brown "Kraft" Paper.....	1 pint..... 5 x $7\frac{1}{2}$ ".....	4 50
" 36	" " ".....	1 pound..... $5\frac{1}{2}$ x 8 ".....	5 00
" 39	" " ".....	1 quart..... $6\frac{1}{2}$ x $9\frac{1}{4}$ ".....	6 00
" 42	" " ".....	3 pints..... $7\frac{1}{2}$ x $10\frac{1}{4}$ ".....	7 00
" 45	" " ".....	2 quarts..... $8\frac{1}{2}$ x $11\frac{1}{2}$ ".....	8 00
" 48	" " ".....	3 quarts..... $9\frac{1}{2}$ x $12\frac{1}{2}$ ".....	10 00
" 51	" " ".....	4 quarts..... $10\frac{1}{2}$ x $14\frac{1}{2}$ ".....	12 50
" 54	" " ".....	6 quarts..... $11\frac{3}{4}$ x $16\frac{1}{4}$ ".....	15 00
" 57	" " ".....	8 quarts..... 13 x 18 ".....	17 00

*Bags Nos. 1 to 15 have flaps; only Nos. 11, 13 and 15 are gummed.*

## TELEGRAPHIC CIPHER

By making use of the following Telegraphic words for weights, together with the Telegraphic Cipher attached to each article in this list, our customers will be able to order by wire at trifling expense. The Telegraphic words for QUANTITIES must always PRECEDE the cipher words for Seeds, but if the same quantity of several articles is needed, the word for that quantity should be placed before the word for the first article only. For example:

“**Freight Adjust Lagrange, Lemhi, Lorain.**” Means “Ship by first freight One Hundred Pounds each of Ferry’s First and Best, Telephone and Champion of England Peas.”

“**Express Abort Caddo, Cannon, Catoosa.**” Means “Send by first express Two Pounds each of Early Jersey Wakefield, Early Winnigstad and D. M. Ferry & Co’s Premium Late Flat Dutch Cabbage.”

### TELEGRAPHIC WORDS FOR WEIGHTS

Quantity OUNCES	Quantity POUNDS	Quantity POUNDS
1/8 . . . . . Aback	45 . . . . . Adapt	650 . . . . . Against
1/4 . . . . . Abaft	50 . . . . . Addict	675 . . . . . Aggress
1/2 . . . . . Abase	55 . . . . . Addle	700 . . . . . Aghast
3/4 . . . . . Abash	60 . . . . . Adduce	725 . . . . . Agnate
1 . . . . . Abate	65 . . . . . Adept	750 . . . . . Alarm
2 . . . . . Abbey	70 . . . . . Adhere	775 . . . . . Albeit
3 . . . . . Abbot	75 . . . . . Adjoin	800 . . . . . Alcove
	80 . . . . . Adjourn	825 . . . . . Alert
	85 . . . . . Adjunct	850 . . . . . Alight
	90 . . . . . Adjunct	875 . . . . . Allay
	95 . . . . . Adjure	900 . . . . . Allege
	100 . . . . . Adjust	925 . . . . . Alloy
	120 . . . . . Admis	950 . . . . . Allude
	125 . . . . . Admire	975 . . . . . Allure
	150 . . . . . Admit	1000 . . . . . Alpaca
	175 . . . . . Admix	1200 . . . . . Almond
	180 . . . . . Adobe	1500 . . . . . Alpine
	200 . . . . . Adopt	1800 . . . . . Alms
	225 . . . . . Adore	2000 . . . . . Alter
	240 . . . . . Adolescent	2400 . . . . . Alum
	250 . . . . . Adrift	2500 . . . . . Alvine
	275 . . . . . Adult	3000 . . . . . Amass
	300 . . . . . Advantage	3500 . . . . . Amaze
	325 . . . . . Advent	4000 . . . . . Ambush
	350 . . . . . Adverse	4500 . . . . . Amend
	360 . . . . . Aerolite	5000 . . . . . Amenity
	375 . . . . . Aerial	5500 . . . . . Amiss
	400 . . . . . Affect	6000 . . . . . Ample
	420 . . . . . Affair	6500 . . . . . Amuse
	425 . . . . . Affirm	7000 . . . . . Analyze
	450 . . . . . Affix	7500 . . . . . Anchor
	475 . . . . . Afford	8000 . . . . . Ancient
	480 . . . . . Affiant	8500 . . . . . Adroid
	500 . . . . . Affray	9000 . . . . . Angler
	525 . . . . . Affront	9500 . . . . . Anile
	540 . . . . . Afflux	10000 . . . . . Anthem
	550 . . . . . Afloat	15000 . . . . . Antic
	575 . . . . . Afoot	20000 . . . . . Antler
	600 . . . . . Afore	25000 . . . . . Antelope
	625 . . . . . Afraid	36000 . . . . . Antidote

NOTE.—The above Code for TELEGRAMS only—Not for orders by mail.

WHOLESALE PRICE LIST  
OF  
**SEEDS IN BULK**  
1925



**SPINACH**

**KING OF DENMARK**

A variety of distinctive merit.  
Remains in condition from one to  
two weeks after other varieties  
have gone to seed.

---

**D. M. FERRY & CO.**

**DETROIT, MICHIGAN**